

**STEEL FOUNDERS' SOCIETY OF AMERICA
BUSINESS REPORT**

SFSA Trend Cards (%-12 mos. Ago)	12 Mo Avg	3 Mo Avg	Aug	Jul
--	-----------	----------	-----	-----

Carbon & Low Alloy

Shipments	-23.3	-52.9	-58.0	-55.3
Bookings	-31.6	-36.3	-0.5	-50.9
Backlog (wks)	7.3	6.1	7.0	6.3

High Alloy

Shipments	3.8	-41.7	-6.0	-71.1
Bookings	-2.9	-39.0	-0.6	-61.6
Backlog (wks)	6.3	4.3	5.0	5.0

**Department of Commerce
Census Data**

Iron & Steel Foundries (million \$)

Shipments	1,393.1	1,145.3	1,175	1,122
New Orders	1,315.3	1,142.7	1,200	1,076
Inventories	2,583.7	2,312.0	2,278	2,294

Nondefense Capital Goods (billion \$)

Shipments	59.9	56.1	55.4	56.8
New Orders	55.0	53.7	52.4	56.7
Inventories	142.0	137.4	134.9	137.4

**Nondefense Capital Goods
less Aircraft (billion \$)**

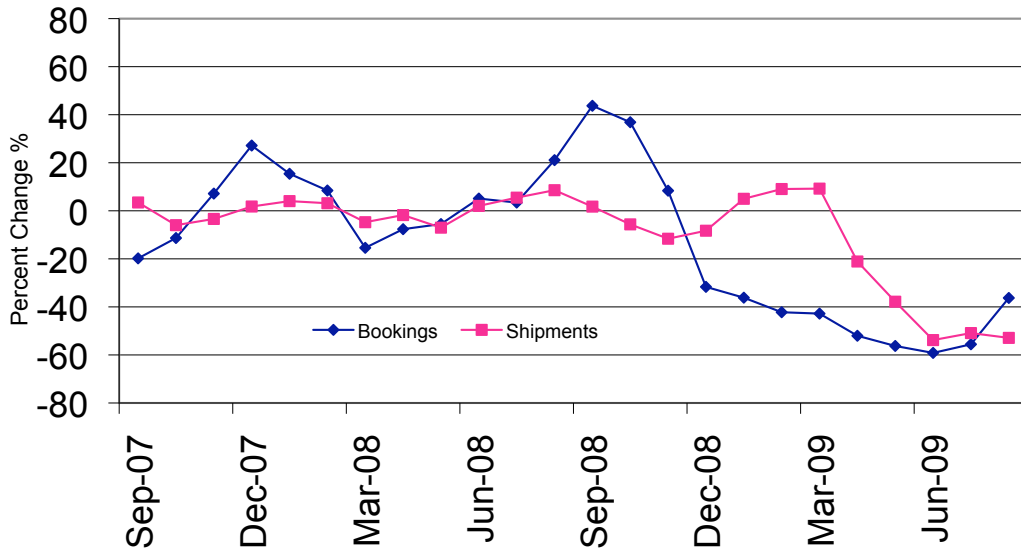
Shipments	56.4	52.4	51.9	53.0
New Orders	53.6	51.4	51.1	51.6
Inventories	105.6	99.8	98.5	99.1

Inventory/Orders		1.94	1.93	1.92
Inventory/Shipments		1.91	1.90	1.87
Orders/Shipments		0.98	0.98	0.97

American Iron and Steel Institute

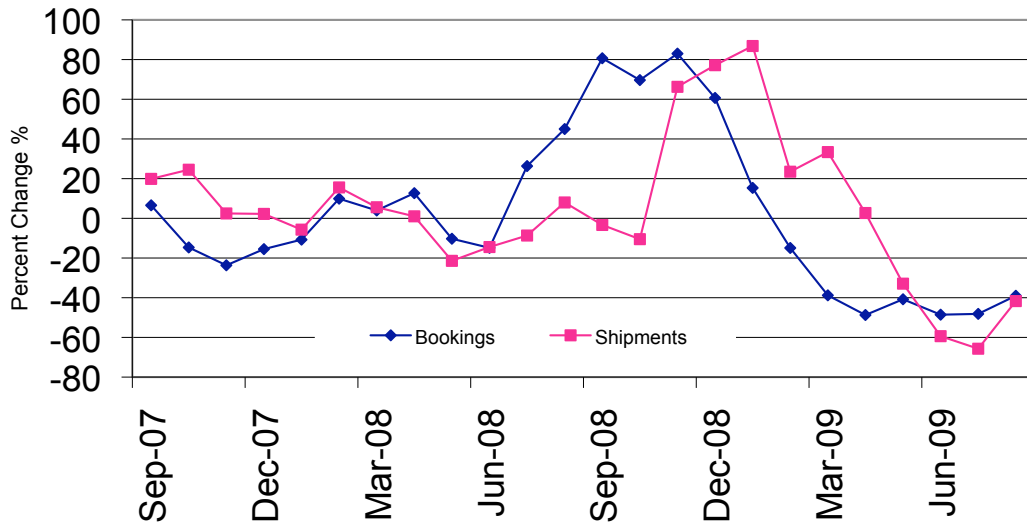
Raw Steel Shipments (million net tons)	5.1	5.2	5.6	5.3
---	-----	-----	-----	-----

Carbon & Low Alloy Casting Market Trends



SFSA Postcards

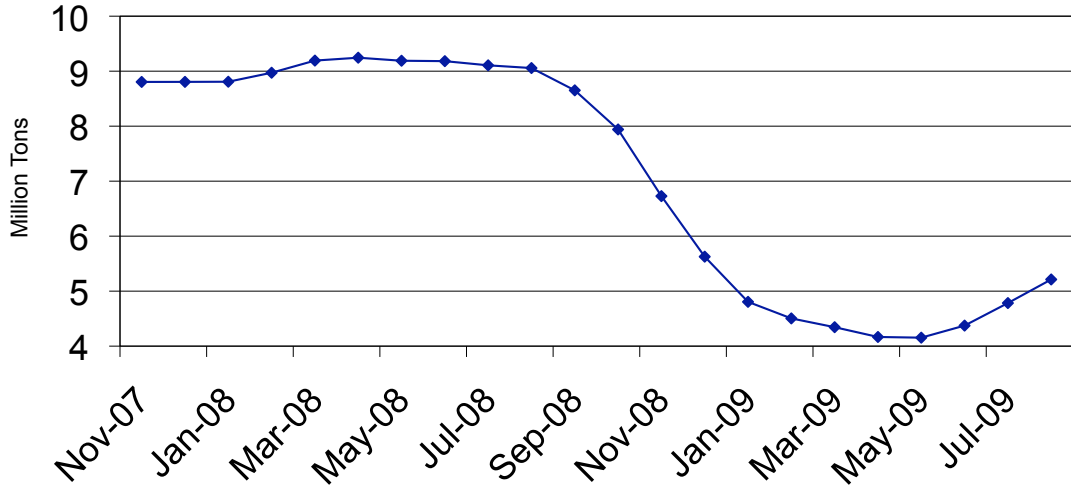
High Alloy Casting Market Trends



SFSA Postcards

Raw Steel Shipments

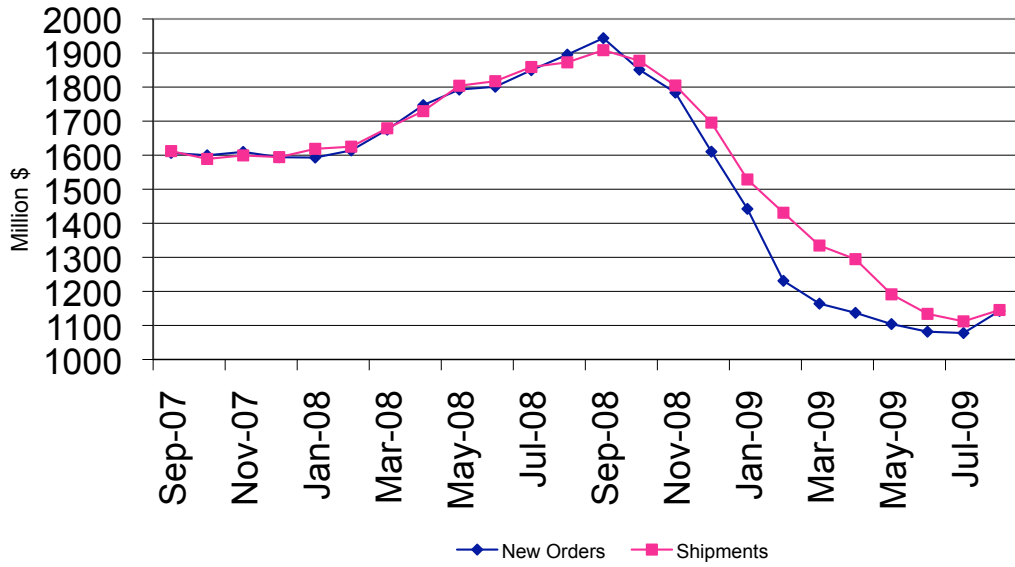
3 month average



AISI Data

Iron and Steel Castings

3 month average

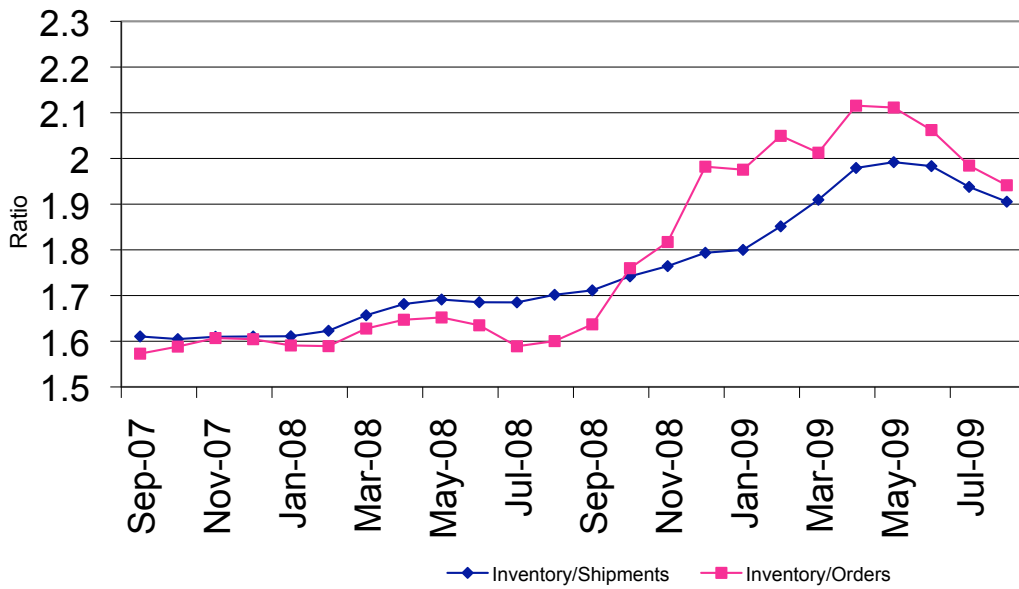


SFSA

t

Nondefense Capital Goods less Aircraft

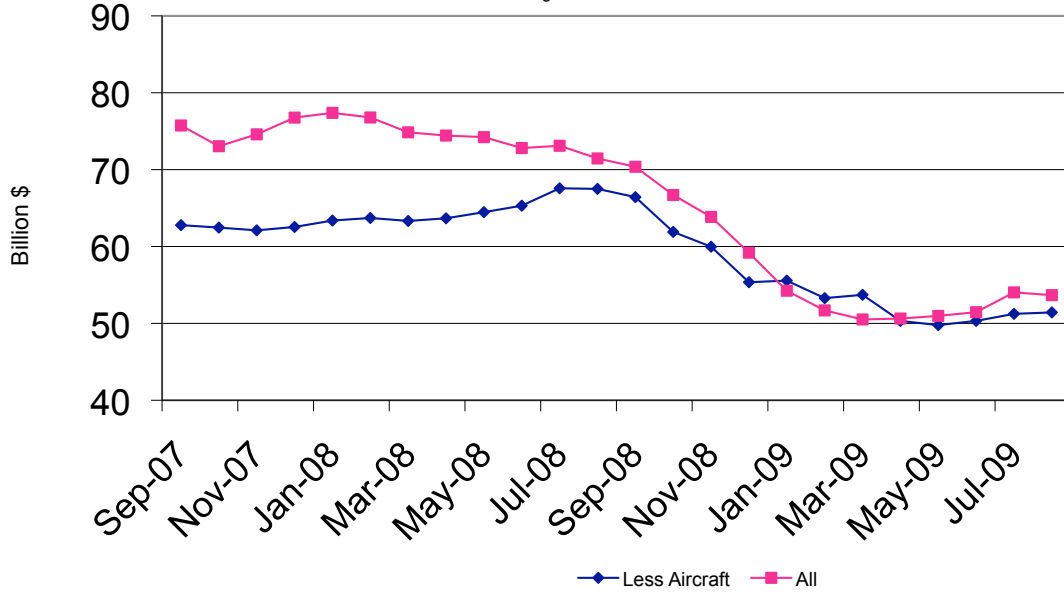
3 month average



Department of Commerce

Nondefense Capital Goods New Orders

3 month average



Department of Commerce