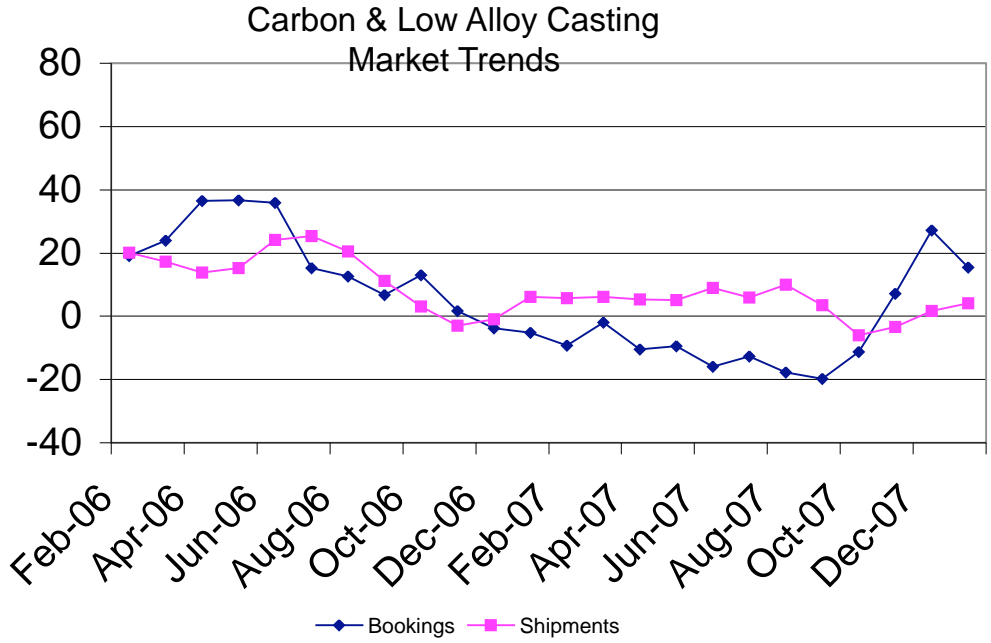
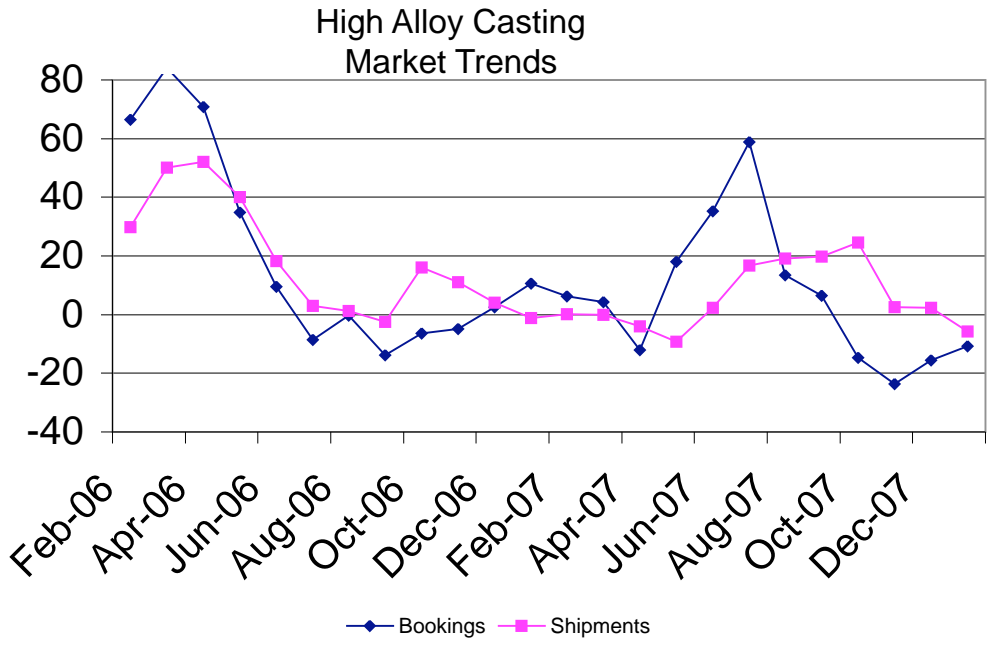


**STEEL FOUNDERS' SOCIETY OF AMERICA  
BUSINESS REPORT**

<b>SFSA Trend Cards</b> (%-12 mos. Ago)	12 Mo Avg	3 Mo Avg	Jan	Dec
<b>Carbon &amp; Low Alloy</b>				
Shipments	2.4	4.0	-9.9	9.0
Bookings	-4.7	15.4	-18.3	45.0
Backlog (wks)	10.5	9.9	9.6	9.5
<b>High Alloy</b>				
Shipments	7.9	-5.7	28.8	12.1
Bookings	5.4	-10.7	-13.8	31.6
Backlog (wks)	11.0	10.3	9.5	10.5
<b>Department of Commerce Census Data</b>				
<b>Iron &amp; Steel Foundries (million \$)</b>				
Shipments	1,595.8	1,619	1,626	1,618
New Orders	1,589.7	1,593	1,589	1,587
Inventories	2,505.6	2,569	2,555	2,588
<b>Nondefense Capital Goods (billion \$)</b>				
Shipments	66.8	68.4	69.3	68.4
New Orders	76.1	77.4	74.9	81.2
Inventories	122.5	127.0	128.7	126.7
<b>Nondefense Capital Goods less Aircraft (billion \$)</b>				
Shipments	61.3	62.6	62.7	63.0
New Orders	62.6	63.4	64.1	64.4
Inventories	98.8	100.8	101.2	100.7
Inventory/Orders		1.59	1.58	1.56
Inventory/Shipments		1.61	1.62	1.60
Orders/Shipments		1.01	1.02	1.02
<b>American Iron and Steel Institute</b>				
Raw Steel Shipments (million net tons)	8.9	8.8	9.2	8.5



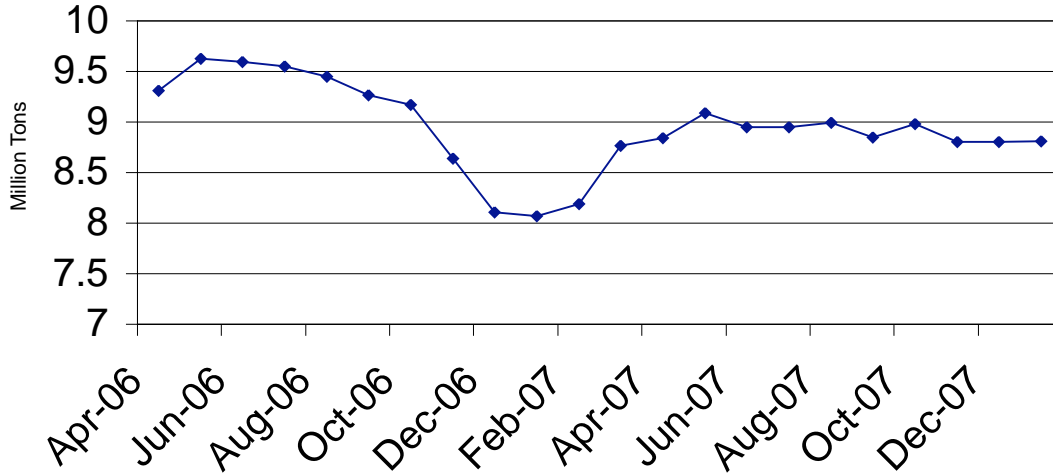
SFSA Postcards



SFSA Postcards

# Raw Steel Shipments

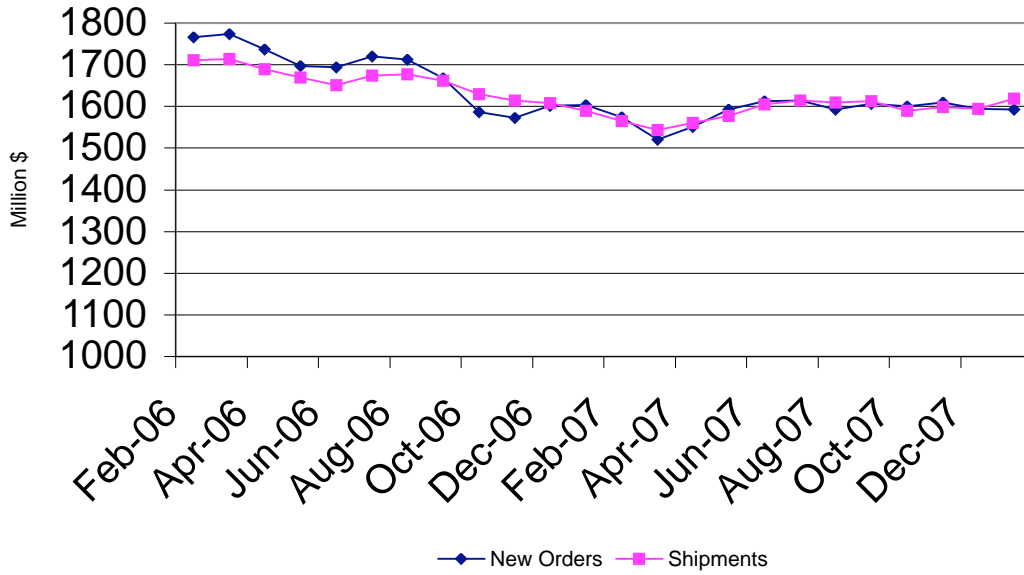
3 month average



AISI Data

# Iron and Steel Castings

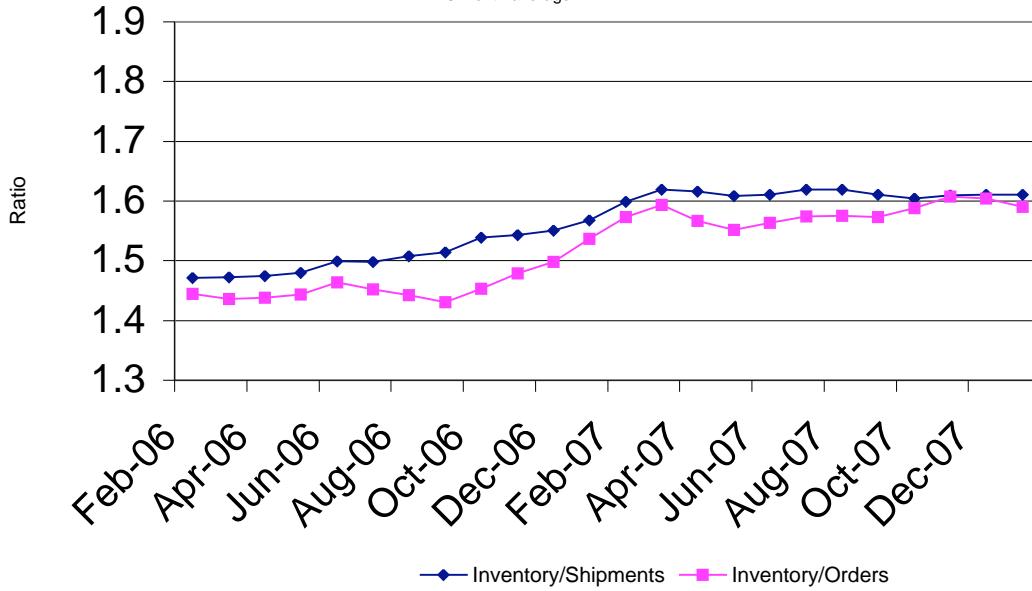
3 month average



SFSA

### Nondefense Capital Goods less Aircraft

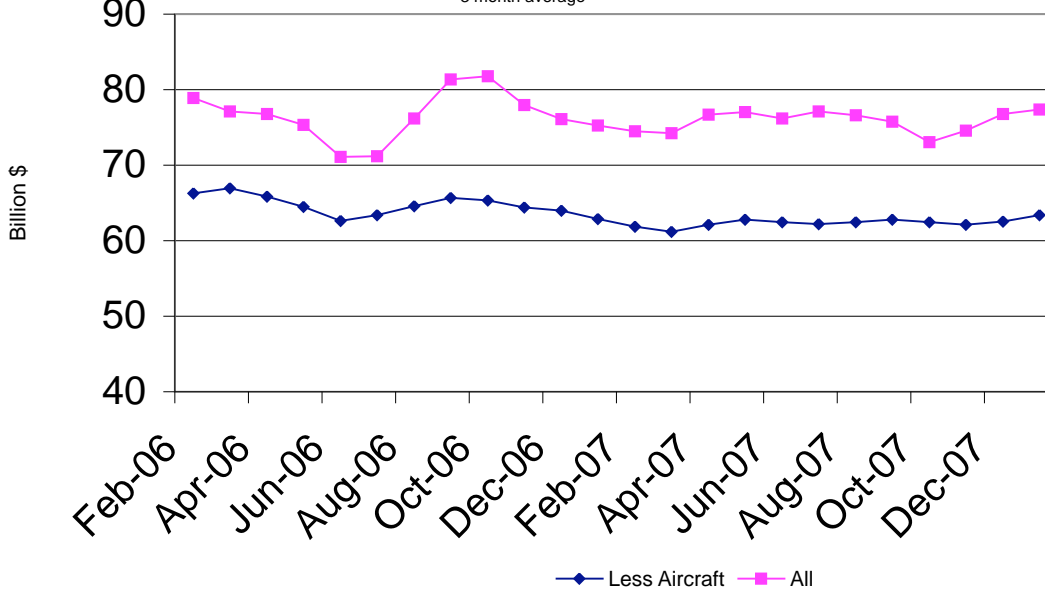
3 month average



Department of Commerce

### Nondefense Capital Goods New Orders

3 month average



Department of Commerce