

**STEEL FOUNDERS' SOCIETY OF AMERICA  
BUSINESS REPORT**

**SFSA Trend Cards**    3 Mo Avg                      Apr                      Mar  
(%-12 mos. Ago)

**Carbon & Low Alloy**

Shipments	13.9	22.1	-4.4
Bookings	36.4	54.7	24.5
Backlog (wks)	12.3	13.5	10.8

**High Alloy**

Shipments	52.0	12.9	74.0
Bookings	70.7	21.2	77.0
Backlog (wks)	10.4	11.3	10.3

**Department of Commerce  
Census Data**

**Iron & Steel Foundries (million \$)**

Shipments	1,689	1,630	1,732
New Orders	1,736	1,677	1,747
Inventories	2,005	2,074	1,960

**Nondefense Capital Goods (billion \$)**

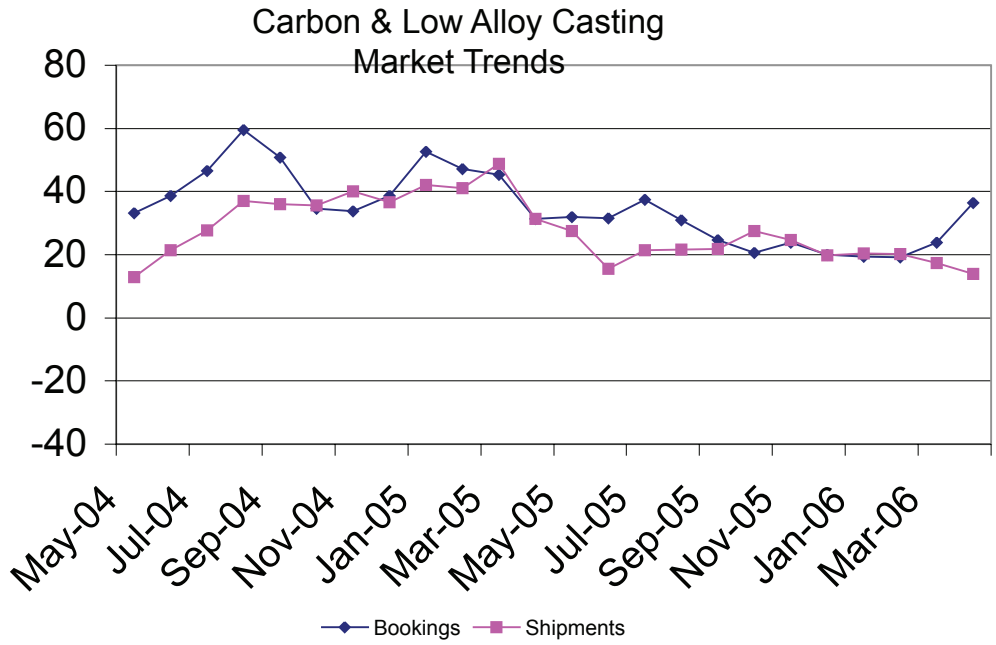
Shipments	69.3	65.2	71.7
New Orders	76.7	71.9	84.0
Inventories	112.9	108.8	115.3

**Nondefense Capital Goods  
less Aircraft (billion \$)**

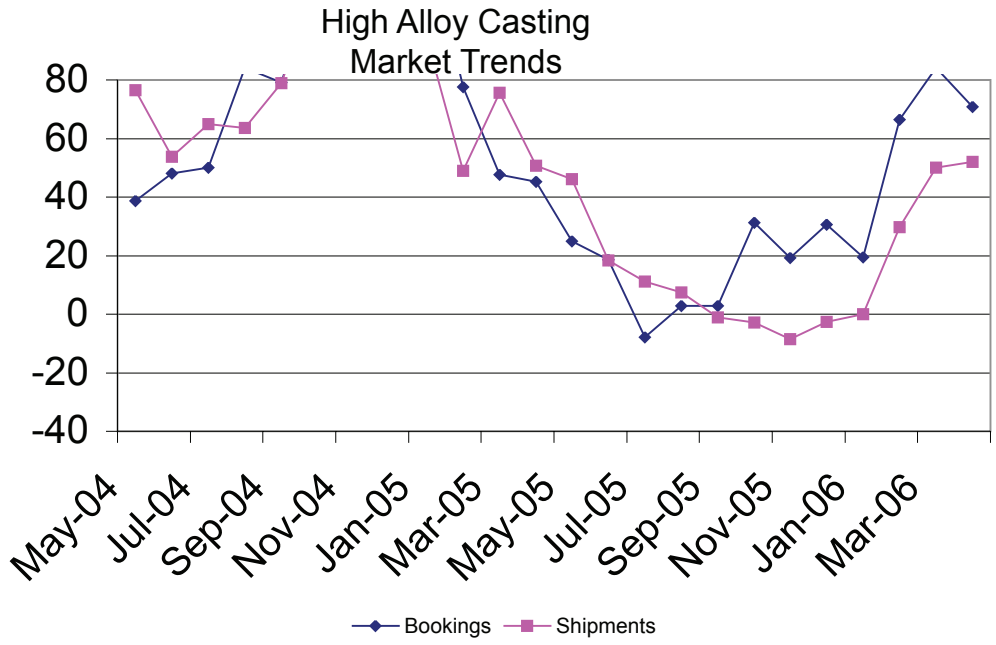
Shipments	64.2	61.3	66.2
New Orders	65.8	62.2	69.0
Inventories	94.6	91.5	96.4
Inventory/Orders	1.44	1.47	1.40
Inventory/Shipments	1.47	1.49	1.46
Orders/Shipments	1.03	1.01	1.04

**American Iron and Steel Institute**

Raw Steel Shipments (million net tons)	9.3	9.2	9.8
---	-----	-----	-----



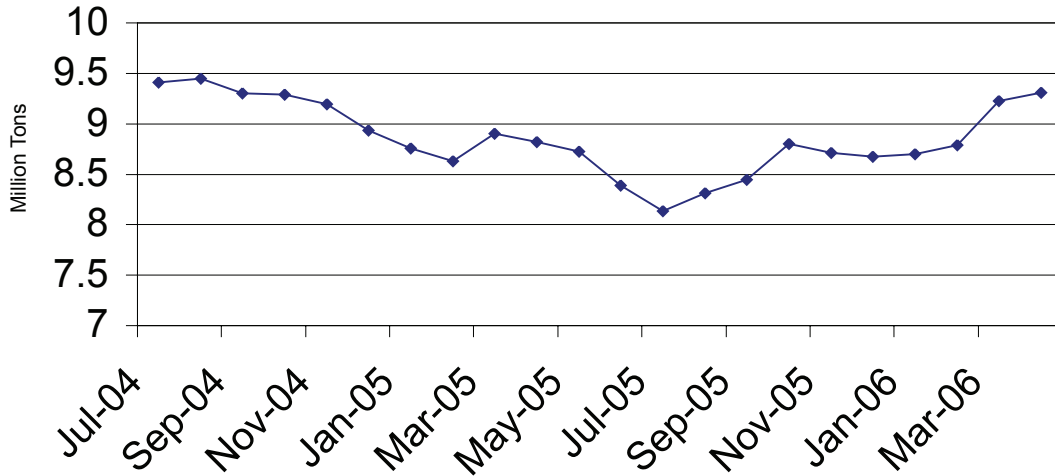
SFSA Postcards



SFSA Postcards

# Raw Steel Shipments

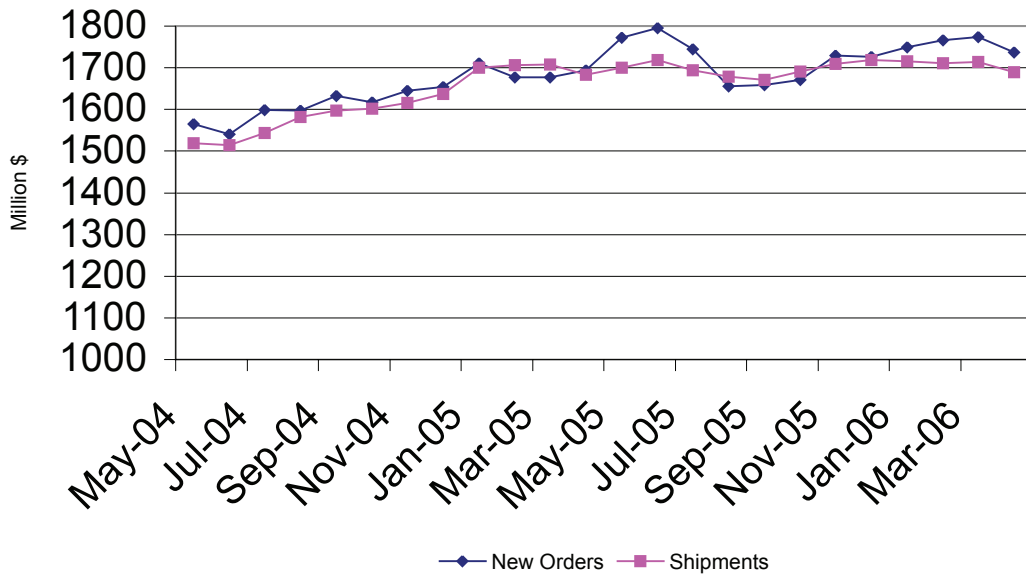
3 month average



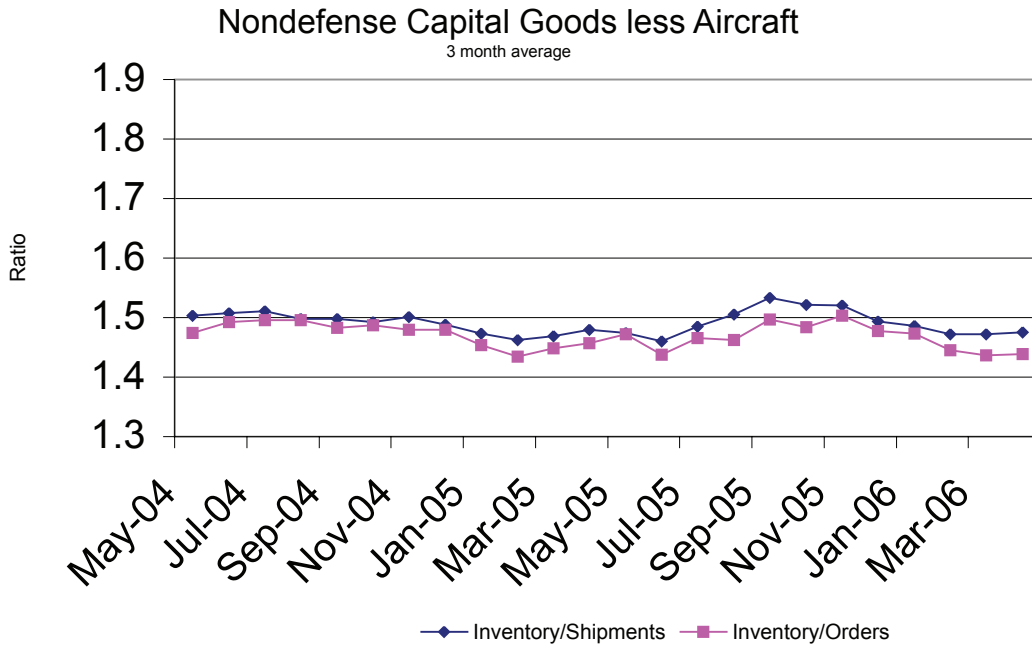
AISI Data

# Iron and Steel Castings

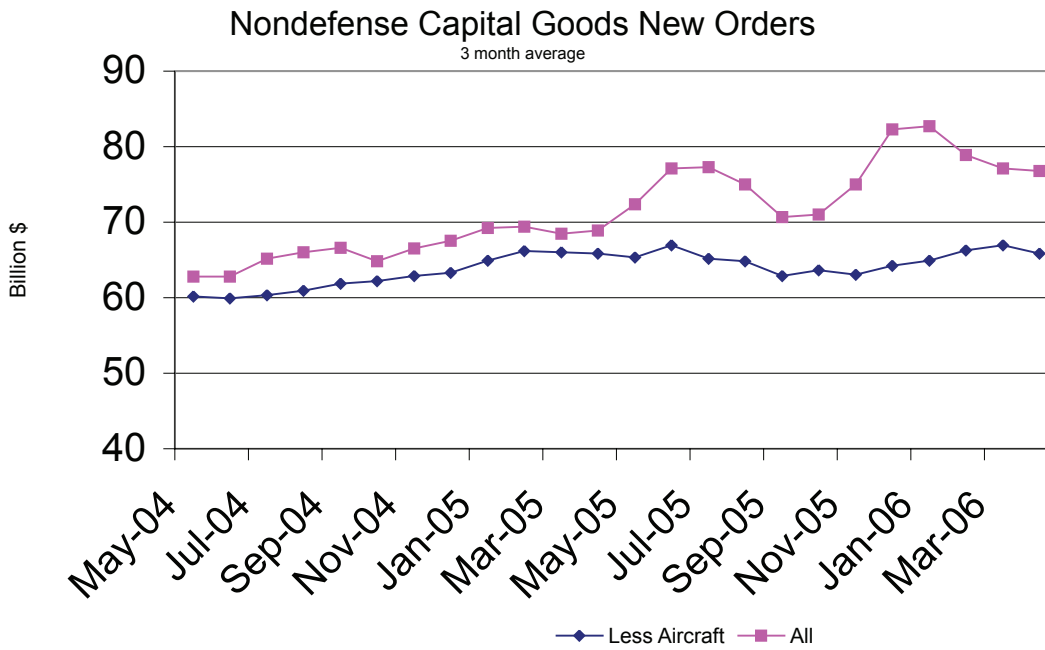
3 month average



SFSA



Department of Commerce



Department of Commerce