

**STEEL FOUNDERS' SOCIETY OF AMERICA
BUSINESS REPORT**

SFSA Trend Cards (%-12 mos. Ago)	3 Mo Avg	Feb	Jan
--	----------	-----	-----

Carbon & Low Alloy

Shipments	20.2	24.0	32.3
Bookings	19.1	30.0	17.3

High Alloy

Shipments	29.8	69.0	7.3
Bookings	66.6	114.0	61.7

**Department of Commerce
Census Data**

Iron & Steel Foundries (million \$)

Shipments	1,712	1,705	1,706
New Orders	1,766	1,785	1,790
Inventories	1,998	1,982	1,995

Nondefense Capital Goods (billion \$)

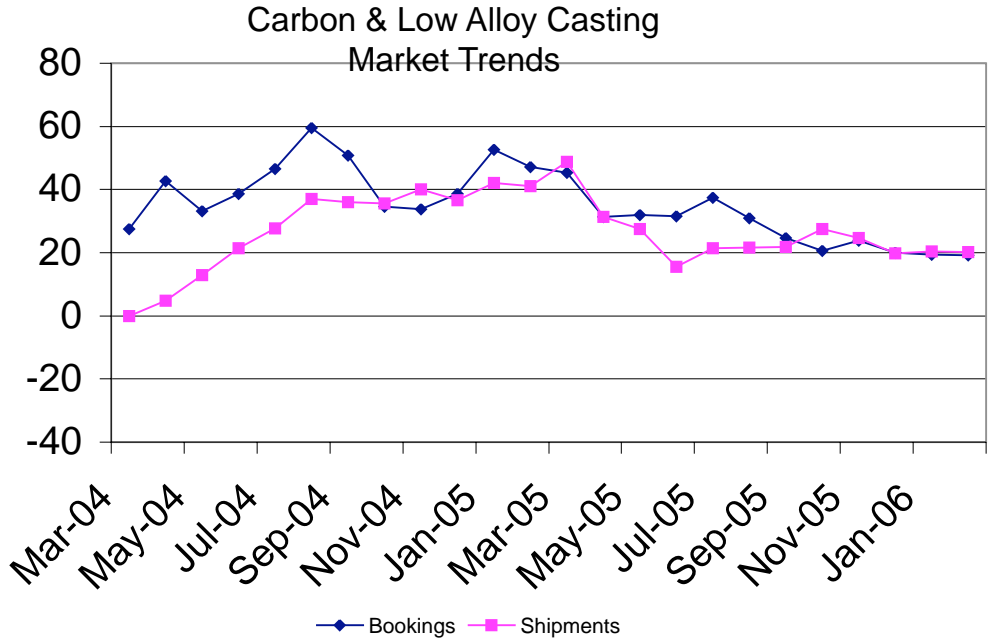
Shipments	71.6	71.0	70.6
New Orders	78.9	74.4	72.9
Inventories	114.3	114.6	114.7

**Nondefense Capital Goods
less Aircraft (billion \$)**

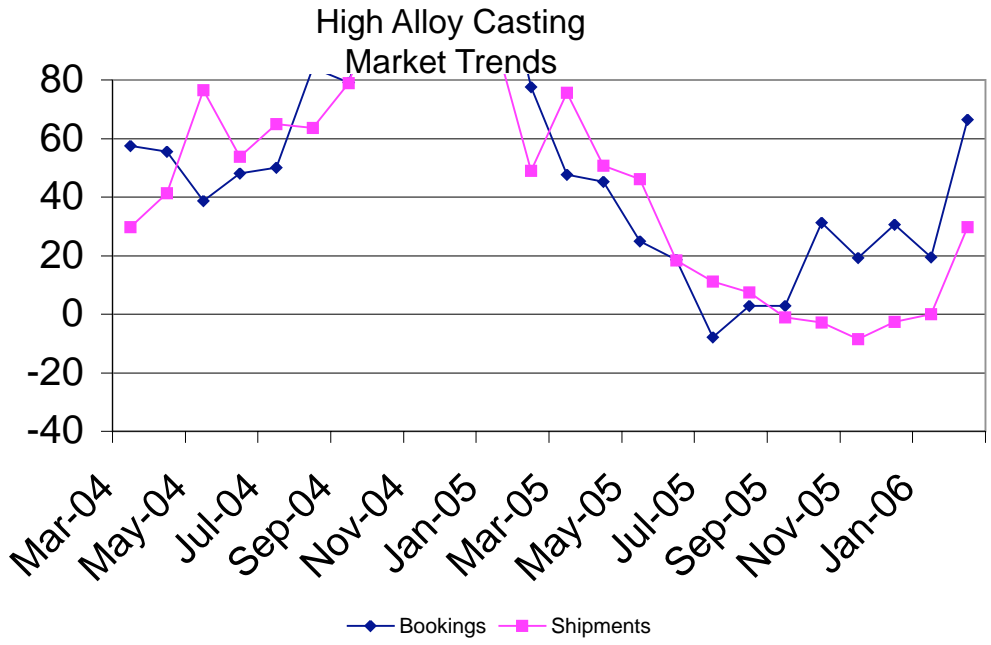
Shipments	65.0	65.0	64.8
New Orders	66.2	66.4	65.6
Inventories	95.7	96.0	96.1
Inventory/Orders	1.44	1.45	1.46
Inventory/Shipments	1.47	1.48	1.48
Orders/Shipments	1.02	1.02	1.01

American Iron and Steel Institute

Raw Steel Shipments (million net tons)	8.8	8.9	8.9
---	-----	-----	-----



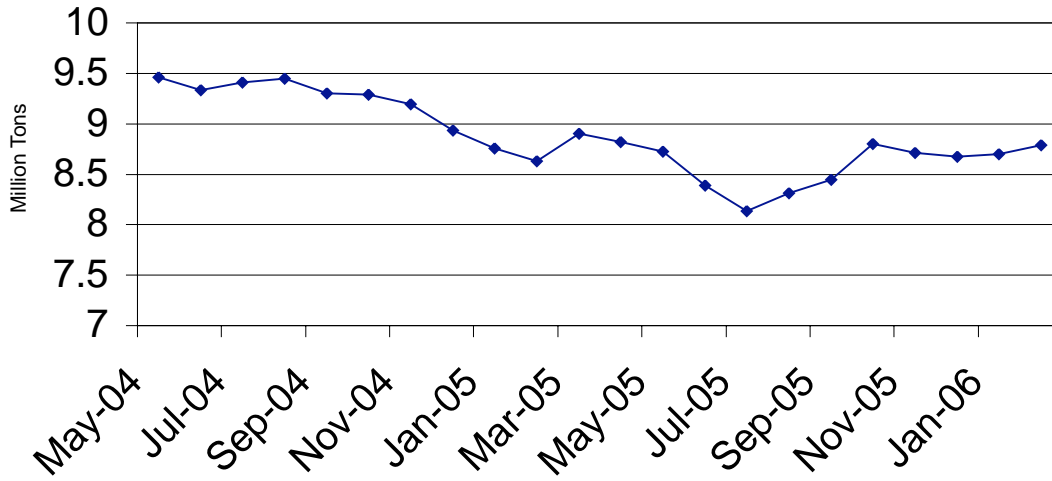
SFSA Postcards



SFSA Postcards

Raw Steel Shipments

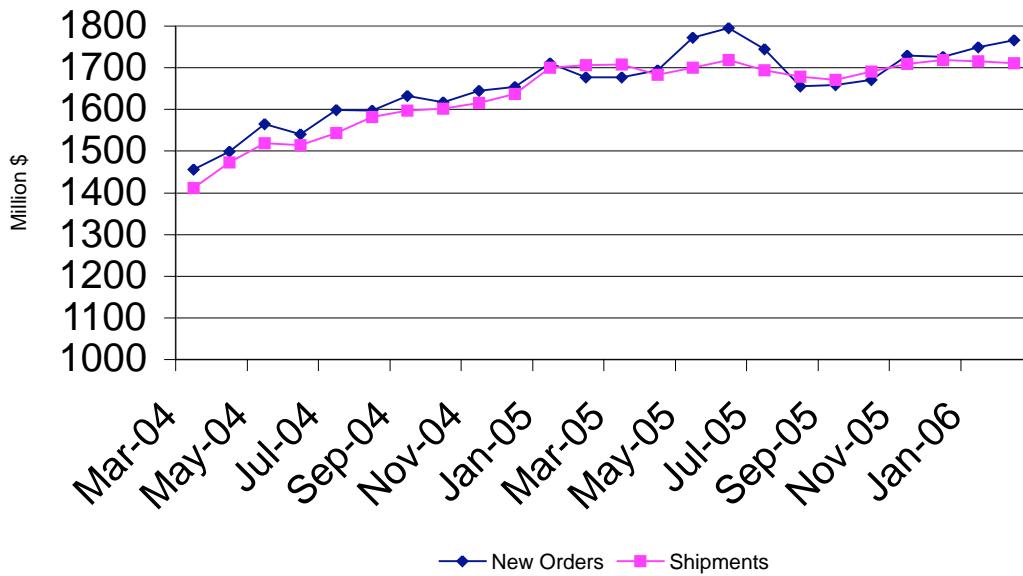
3 month average



AISI Data

Iron and Steel Castings

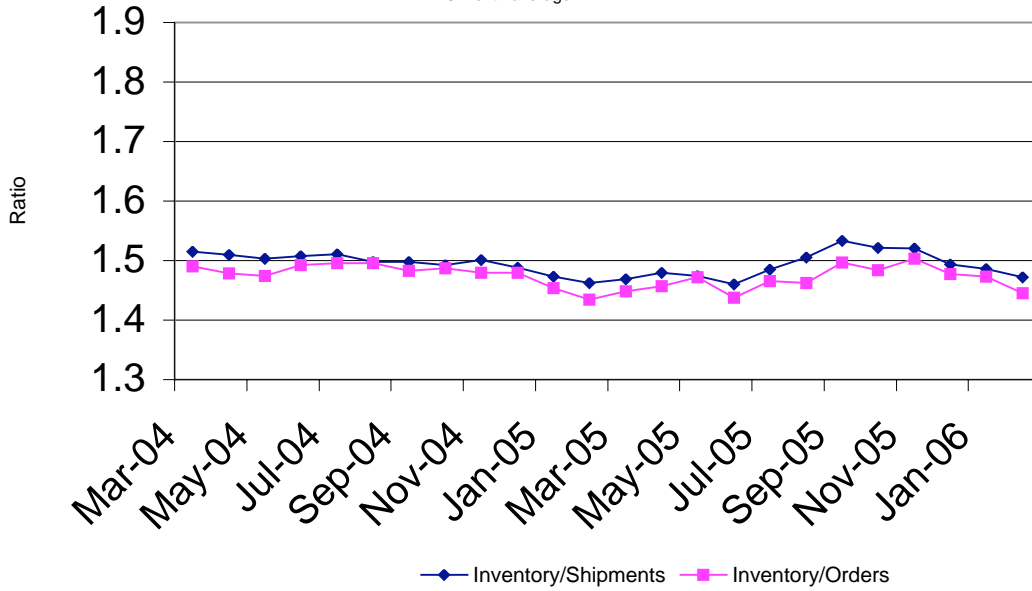
3 month average



SFSA

Nondefense Capital Goods less Aircraft

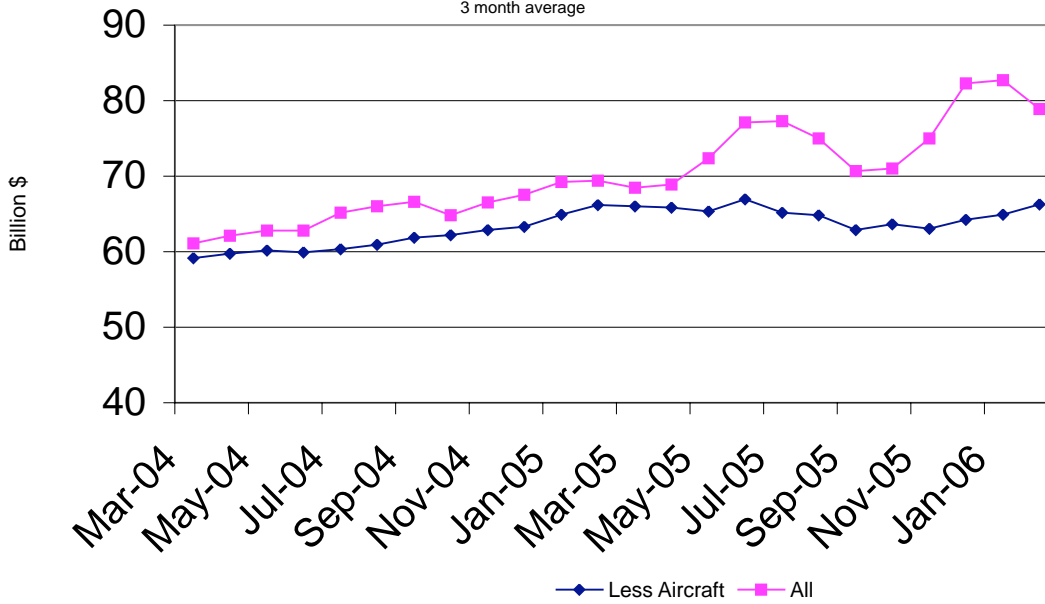
3 month average



Department of Commerce

Nondefense Capital Goods New Orders

3 month average



Department of Commerce