



SFSA CASTEEL REPORTER

Steel Founders' Society of America

a monthly publication
serving SFSA steel casting industry Members

205 Park Avenue, Barrington, IL 60010
847-382-8240 Fax: 847-382-8287
www.sfsa.org

DECEMBER — 2002



*Steel Founders'
Society of America
wishes you a safe
and happy holiday
season!*

**STEEL FOUNDERS' SOCIETY OF AMERICA
BUSINESS REPORT**

SFSA Trend Cards 3 Mo Avg Sep Aug
(%-12 mos. Ago)

Carbon & Low Alloy

Shipments	-17.8	-20.0	-8.0
Bookings	-15.0	-37.4	-7.5

High Alloy

Shipments	13.1	-4.6	14.0
Bookings	-13.6	-34.9	-15.0

**Department of Commerce
Census Data**

Iron & Steel Foundries (million \$)

Shipments	1,322	1,305	1,332
New Orders	1,313	1,325	1,300
Inventories	1,732	1,690	1,724

Nondefense Capital Goods (billion \$)

Shipments	57.4	56.6	57.2
New Orders	57.1	52.9	60.2
Inventories	114.1	113.1	114.2

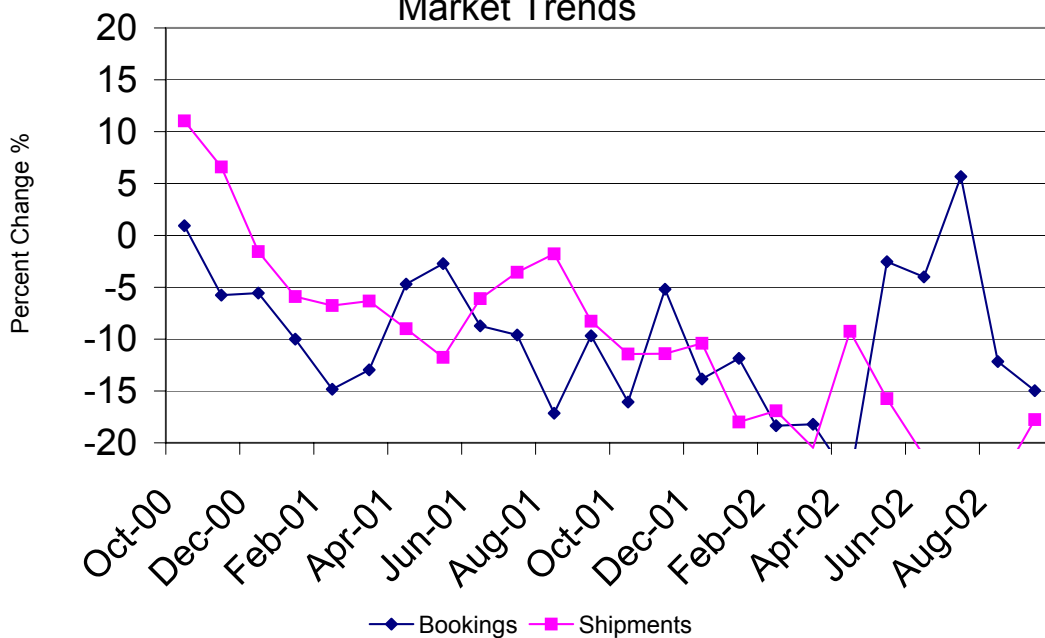
**Nondefense Capital Goods
less Aircraft (billion \$)**

Shipments	54.3	53.4	54.6
New Orders	53.2	50.8	54.1
Inventories	91.3	90.7	91.2
Inventory/Orders	1.72	1.79	1.69
Inventory/Shipments	1.68	1.70	1.67
Orders/Shipments	0.98	0.95	0.99

American Iron and Steel Institute

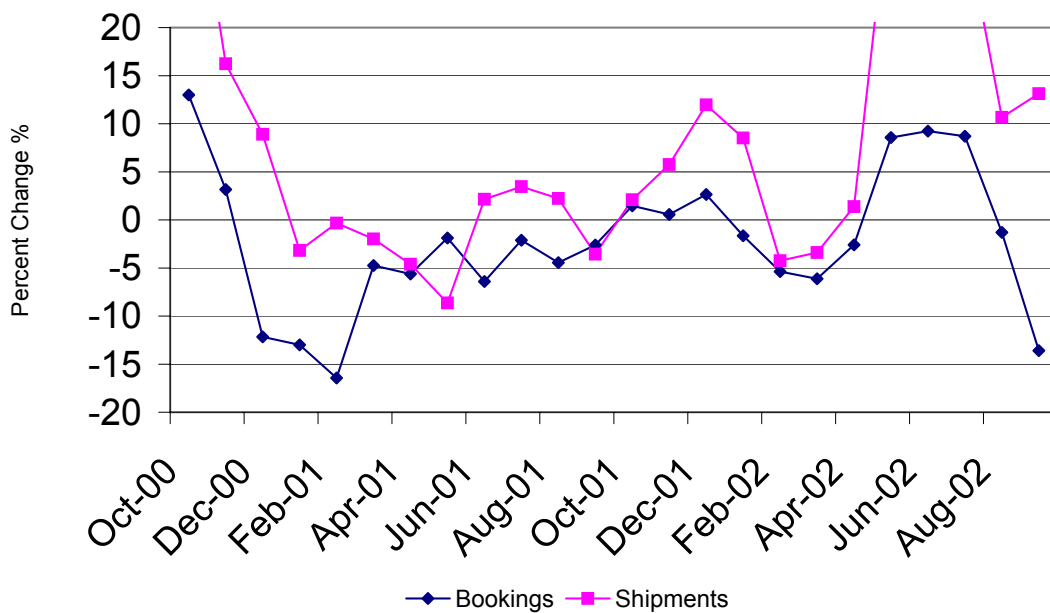
Raw Steel Shipments (million net tons)	8.5	8.4	8.6
---	-----	-----	-----

Carbon & Low Alloy Casting Market Trends



SFSA Postcards

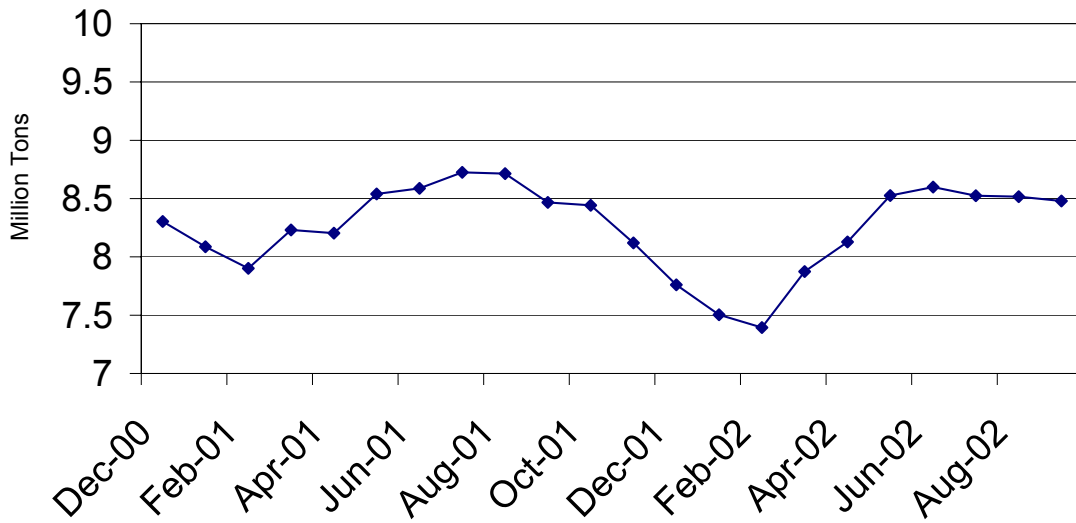
High Alloy Casting Market Trends



SFSA Postcards

Raw Steel Shipments

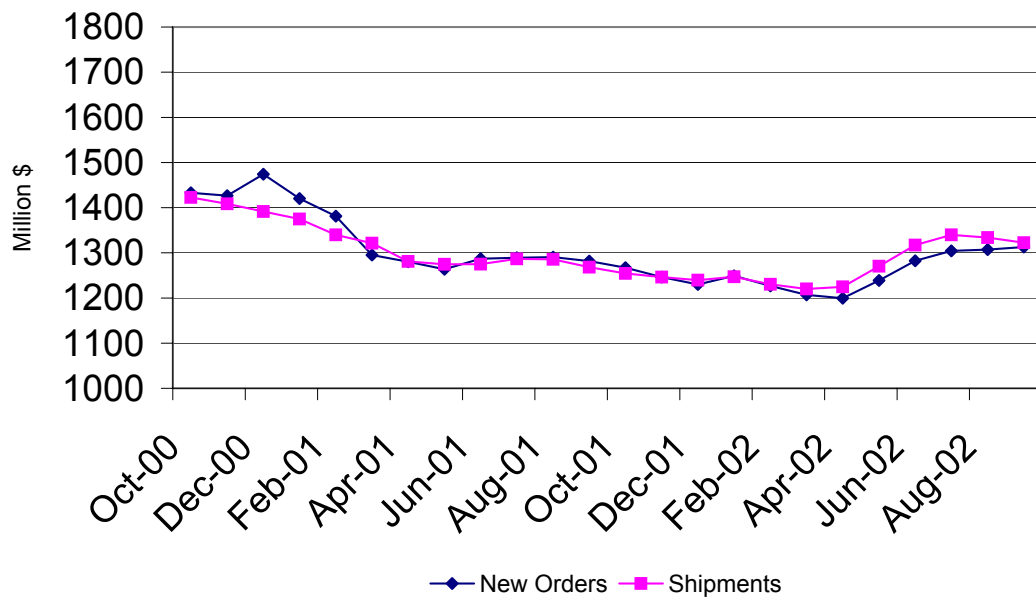
3 month average



AISI Data

Iron and Steel Castings

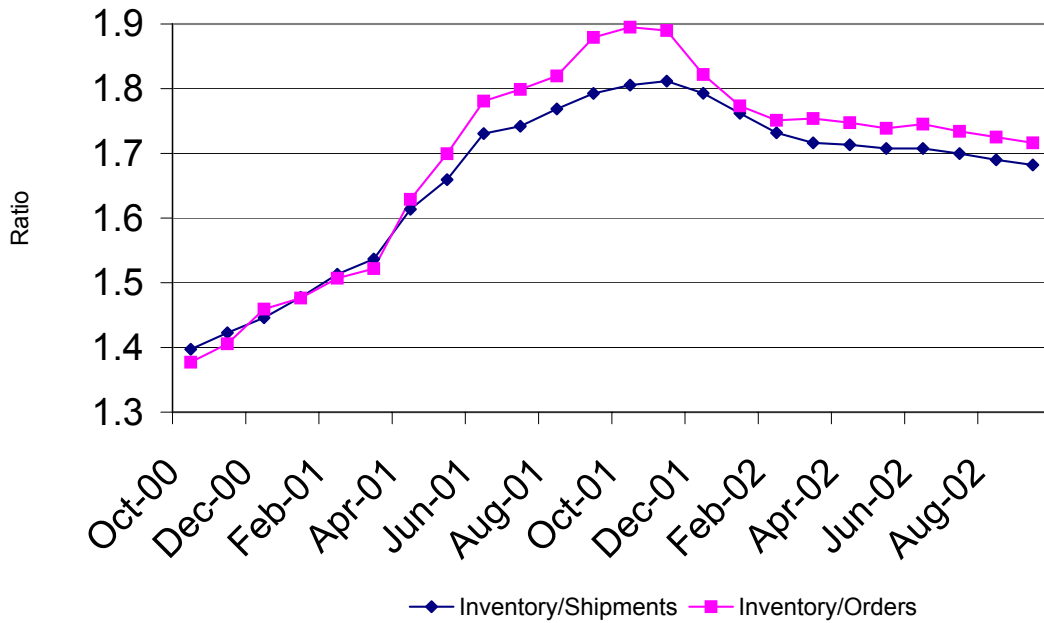
3 month average



SFSA

Nondefense Capital Goods less Aircraft

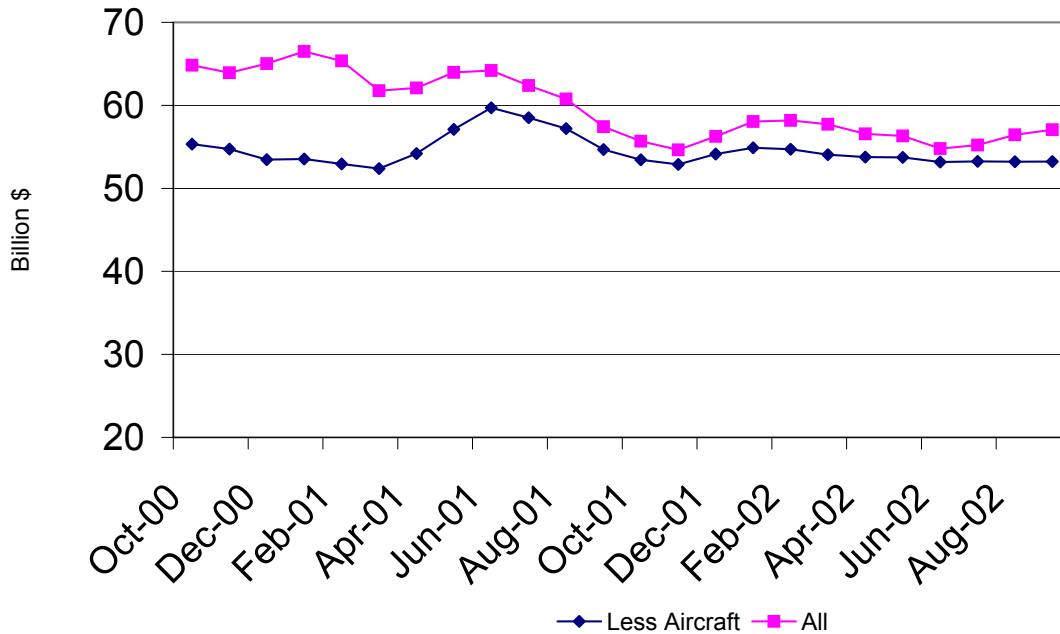
3 month average



Department of Commerce

Nondefense Capital Goods New Orders

3 month average



Department of Commerce