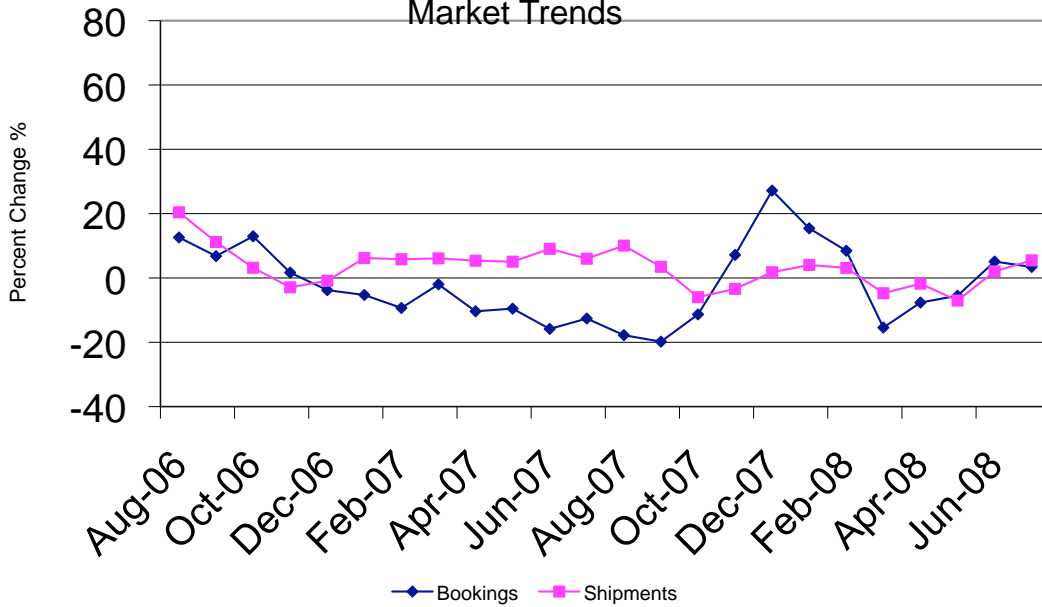


**STEEL FOUNDERS' SOCIETY OF AMERICA  
BUSINESS REPORT**

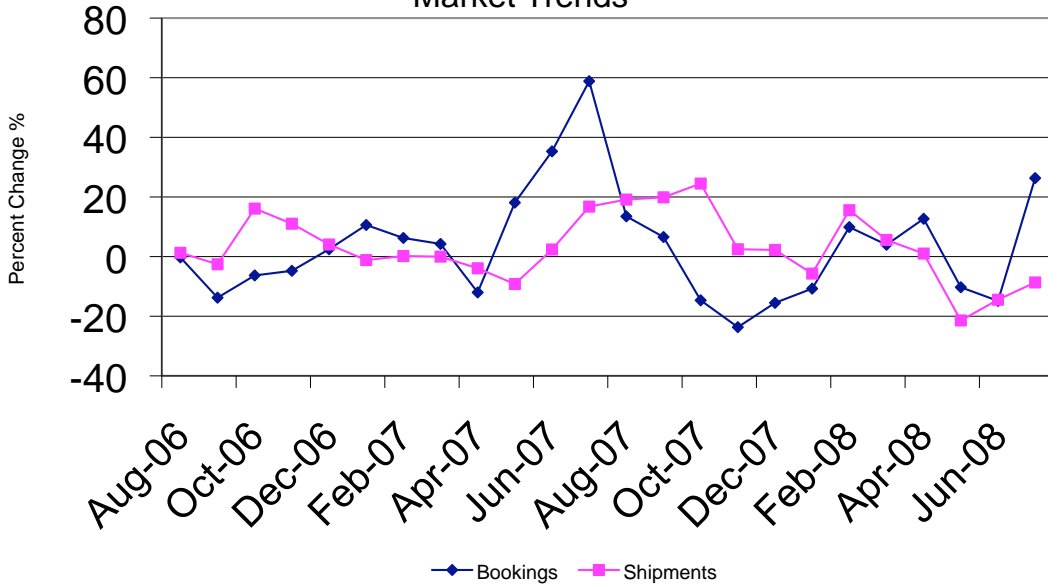
<b>SFSA Trend Cards</b> (%-12 mos. Ago)	12 Mo Avg	3 Mo Avg	Jul	Jun
<b>Carbon &amp; Low Alloy</b>				
Shipments	0.4	5.5	9.3	12.5
Bookings	0.0	3.4	0.0	5.2
Backlog (wks)	10.6	12.0	12.0	12.0
<b>High Alloy</b>				
Shipments	2.8	-8.7	32.5	3.0
Bookings	3.4	26.3	136.0	0.0
Backlog (wks)	11.2	12.5	13.0	12.0
<b>Department of Commerce Census Data</b>				
<b>Iron &amp; Steel Foundries (million \$)</b>				
Shipments	1,699.0	1,859	1,902	1,820
New Orders	1,697.3	1,850	1,951	1,795
Inventories	2,570.7	2,617	2,686	2,602
<b>Nondefense Capital Goods (billion \$)</b>				
Shipments	67.8	68.3	69.0	68.0
New Orders	74.5	73.1	74.5	71.2
Inventories	129.9	136.7	138.5	136.2
<b>Nondefense Capital Goods less Aircraft (billion \$)</b>				
Shipments	62.6	63.6	63.9	63.7
New Orders	64.3	67.6	72.0	65.8
Inventories	103.0	107.2	107.8	107.0
Inventory/Orders		1.59	1.50	1.63
Inventory/Shipments		1.69	1.69	1.68
Orders/Shipments		1.06	1.13	1.03
<b>American Iron and Steel Institute</b>				
Raw Steel Shipments (million net tons)	9.0	9.1	9.2	9.1

### Carbon & Low Alloy Casting Market Trends



SFSA Postcards

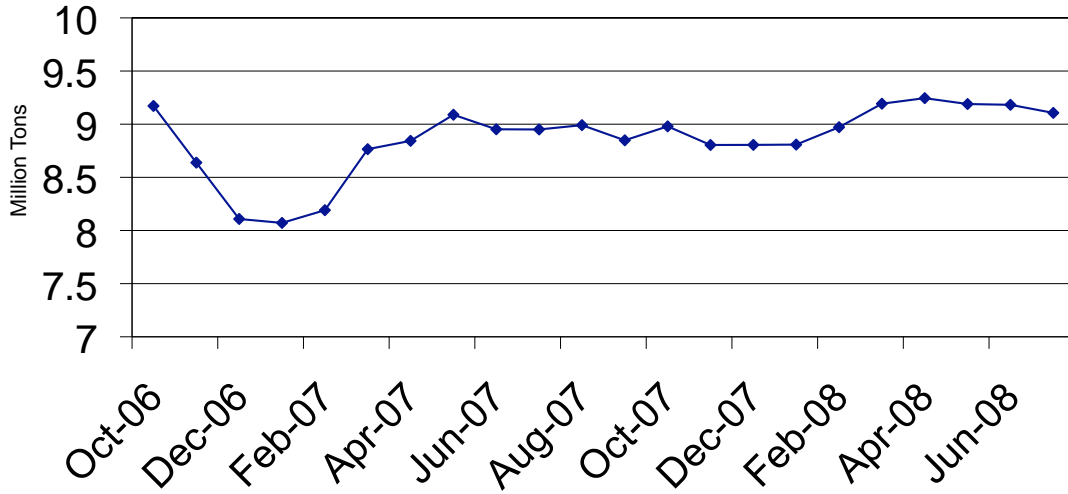
### High Alloy Casting Market Trends



SFSA Postcards

# Raw Steel Shipments

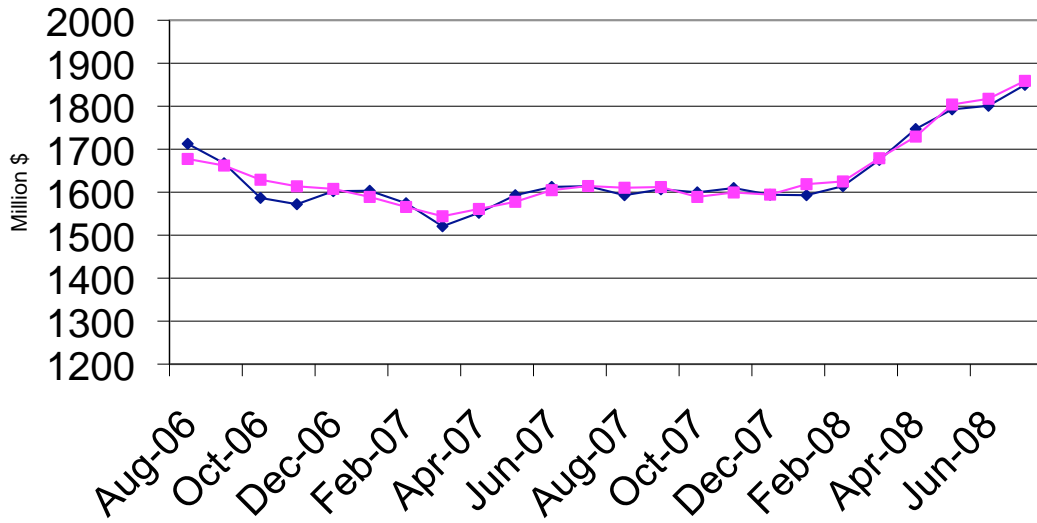
3 month average



AISI Data

# Iron and Steel Castings

3 month average

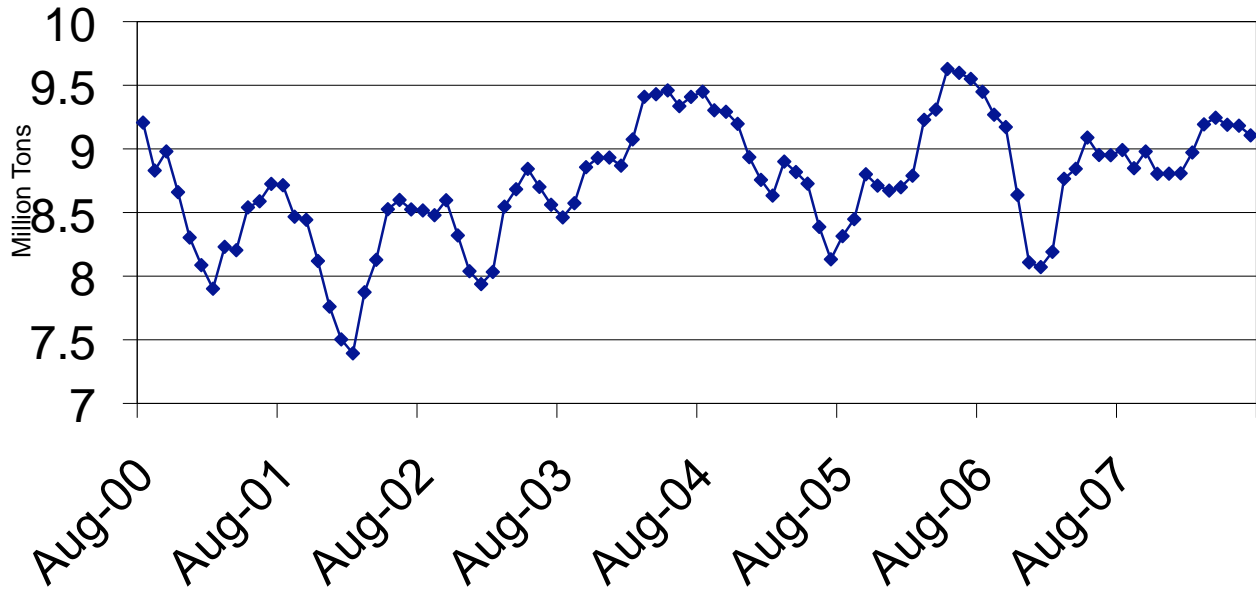


◆ New Orders    ■ Shipments

SFSA

# Raw Steel Shipments

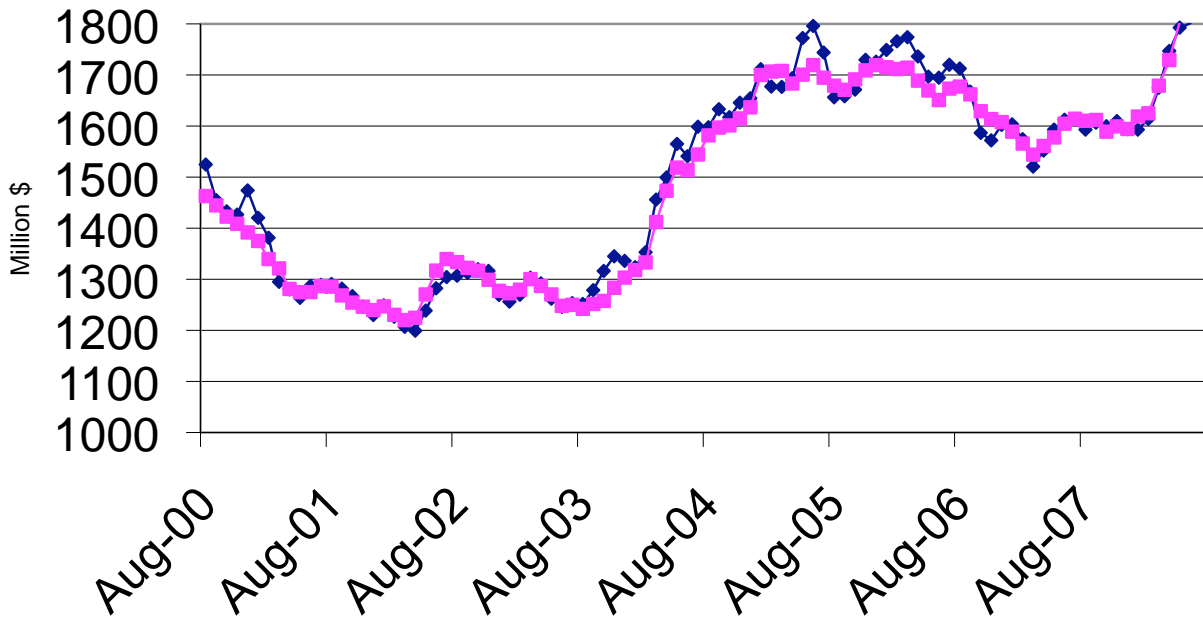
3 month average



AISI Data

# Iron and Steel Castings

3 month average

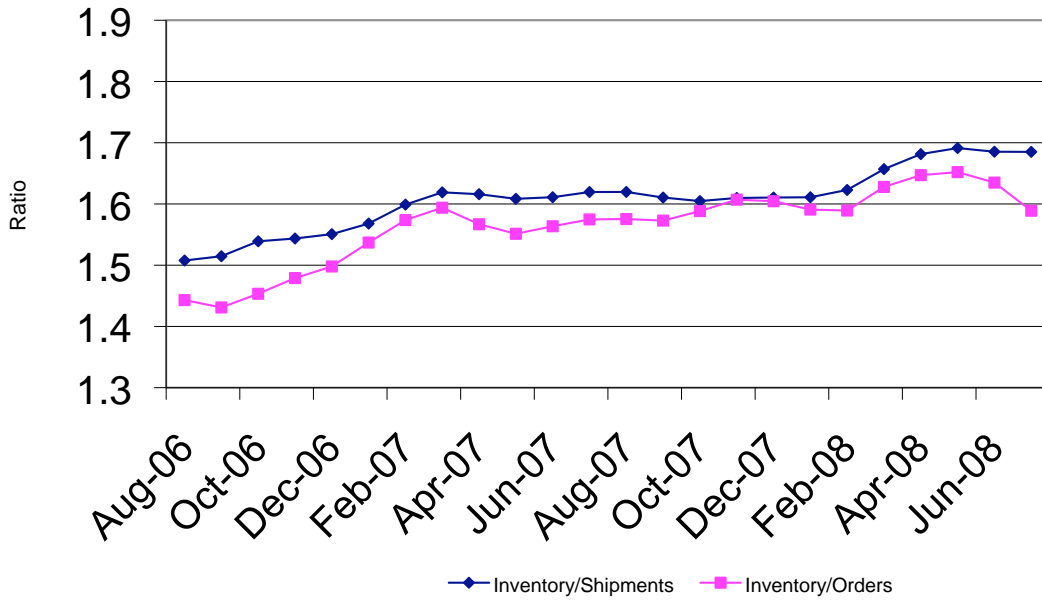


◆ New Orders    ■ Shipments

SFSA

### Nondefense Capital Goods less Aircraft

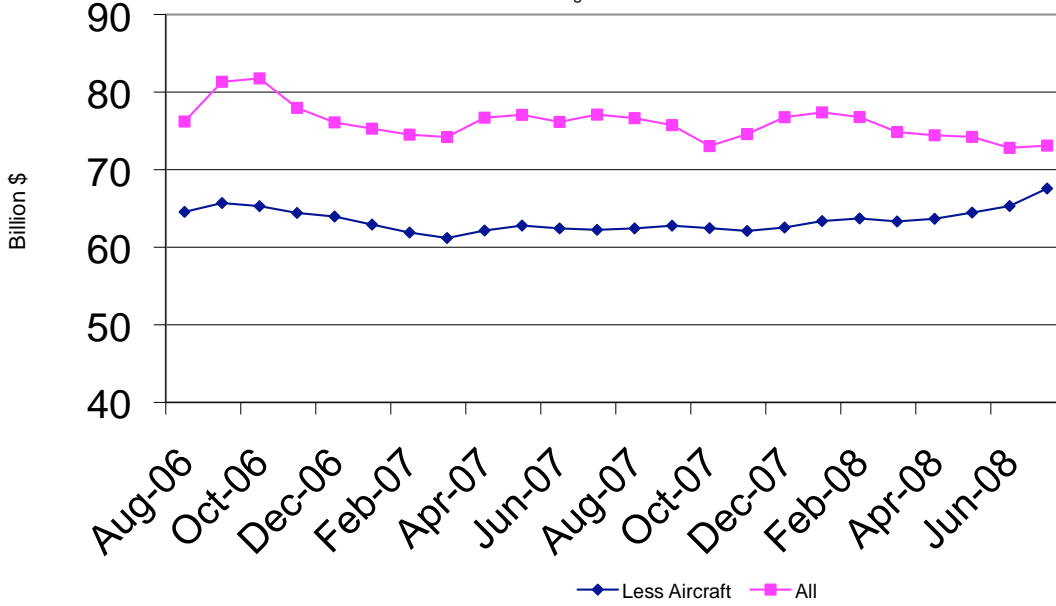
3 month average



Department of Commerce

### Nondefense Capital Goods New Orders

3 month average



Department of Commerce