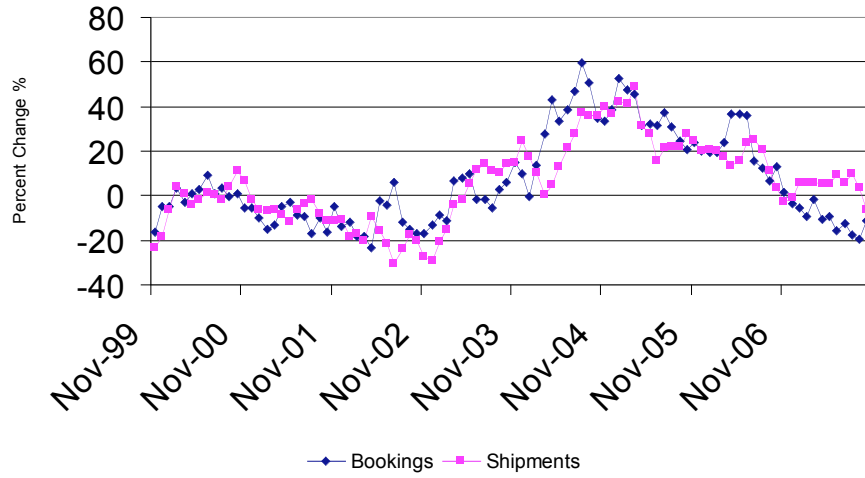
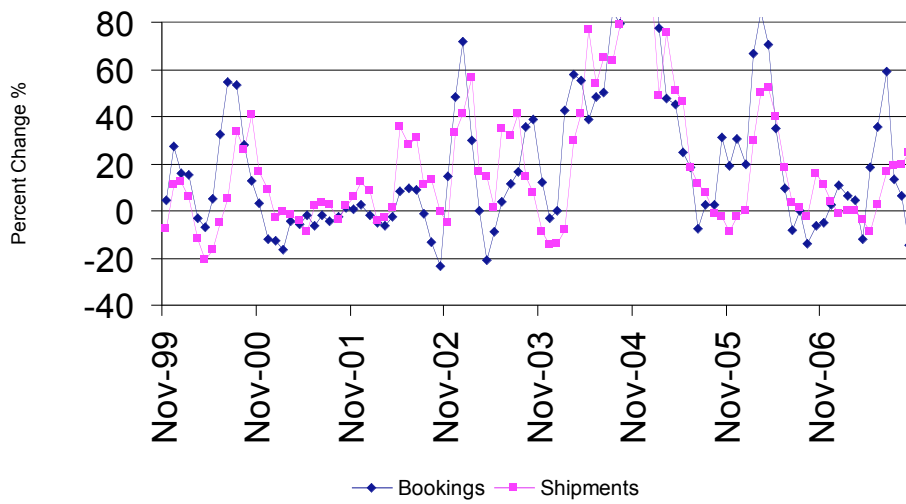


### Carbon & Low Alloy Casting Market Trends

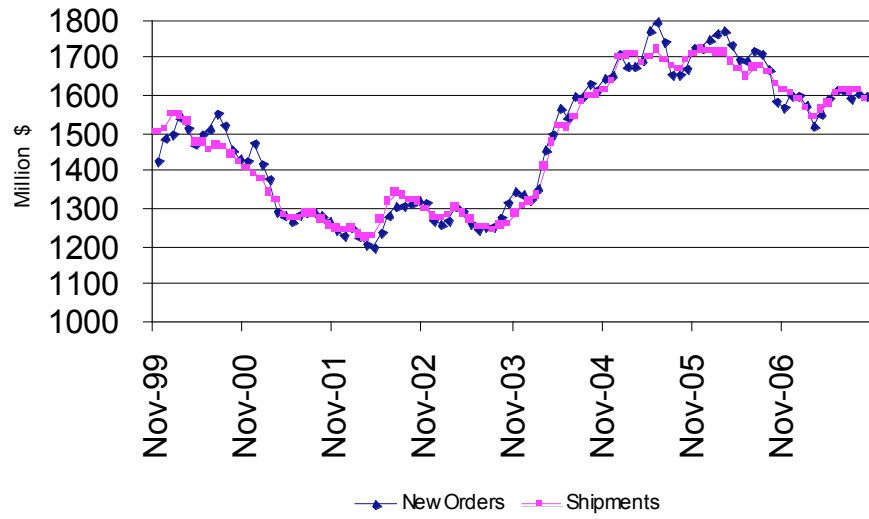


### High Alloy Casting Market Trends



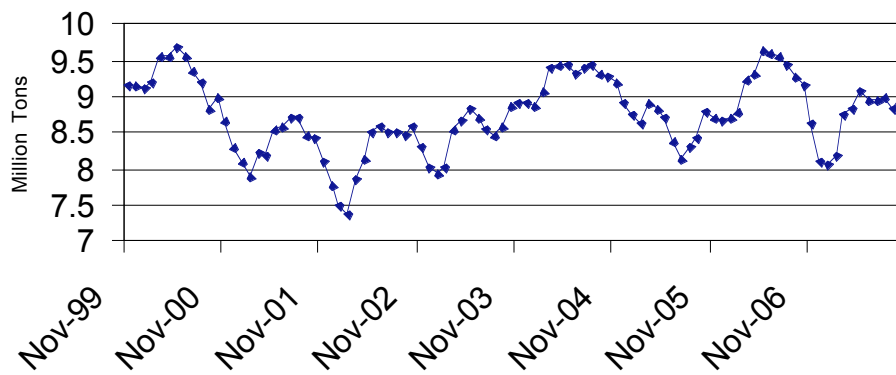
### Iron and Steel Castings

3 month average



### Raw Steel Shipments

3 month average



Market Segment	Estimated 2006 (tons)	Projected 2007 (tons)	2007 Change (%)	Forecast 2008 (tons)	2008 Change (%)
Railroad	684,870	650,627	-5	650,627	0
Mining	143,000	155,870	9	162,105	4
Construction	118,800	116,424	-2	114,096	-2
Trucks	25,920	20,736	-20	20,736	0
Valves	42,000	44,100	5	44,100	0
Pumps	12,075	12,679	5	12,932	2
Oil Field	22,000	25,960	18	27,258	5
Military	10,800	11,556	7	12,712	10
Other Markets	75,400	79,924	6	83,121	4
<b>Total</b>	<b>1,134,865</b>	<b>1,117,875</b>	<b>-1</b>	<b>1,127,686</b>	<b>1</b>

