

**STEEL FOUNDERS' SOCIETY OF AMERICA  
BUSINESS REPORT**

<b>SFSA Trend Cards</b> (%-12 mos. Ago)	12 Mo Avg	3 Mo Avg	Apr	Mar
--	-----------	----------	-----	-----

**Carbon & Low Alloy**

Shipments	0.6	-1.8	-1.0	-14.7
Bookings	-4.0	-7.6	5.1	-26.6
Backlog (wks)	10.4	9.7	11.0	8.0

**High Alloy**

Shipments	9.1	1.0	15.1	-17.9
Bookings	11.5	12.7	12.4	13.8
Backlog (wks)	11.1	11.8	13.0	10.5

**Department of Commerce  
Census Data**

**Iron & Steel Foundries (million \$)**

Shipments	1,637.8	1,729	1,777	1,780
New Orders	1,638.4	1,747	1,805	1,770
Inventories	2,545.8	2,549	2,538	2,562

**Nondefense Capital Goods (billion \$)**

Shipments	67.3	67.0	67.9	66.7
New Orders	75.5	74.4	73.6	75.4
Inventories	126.2	132.6	134.6	133.6

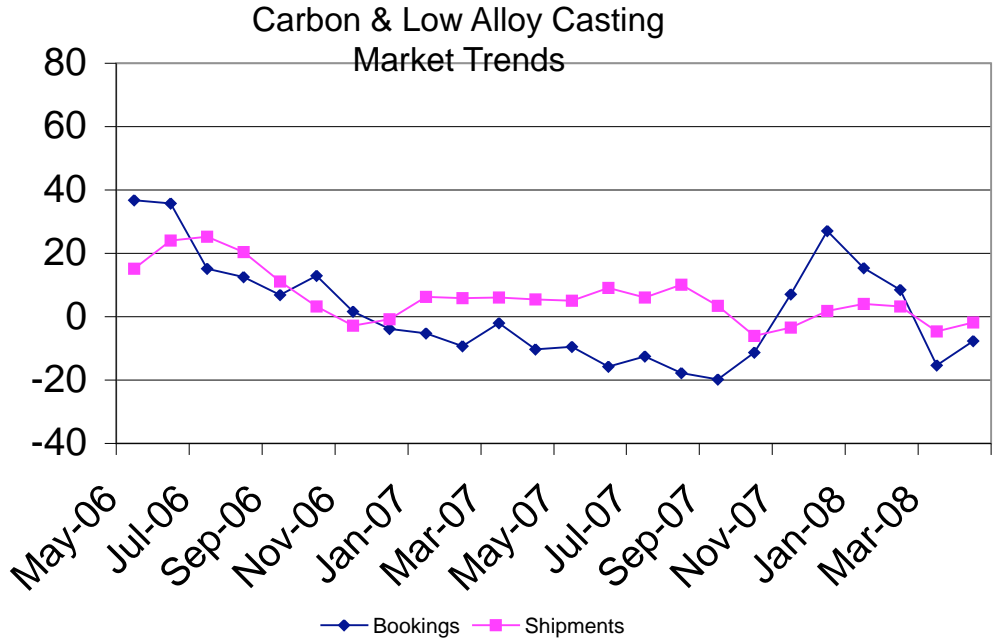
**Nondefense Capital Goods  
less Aircraft (billion \$)**

Shipments	61.8	62.4	63.1	62.5
New Orders	62.9	63.7	65.2	63.2
Inventories	100.7	104.9	106.6	106.1

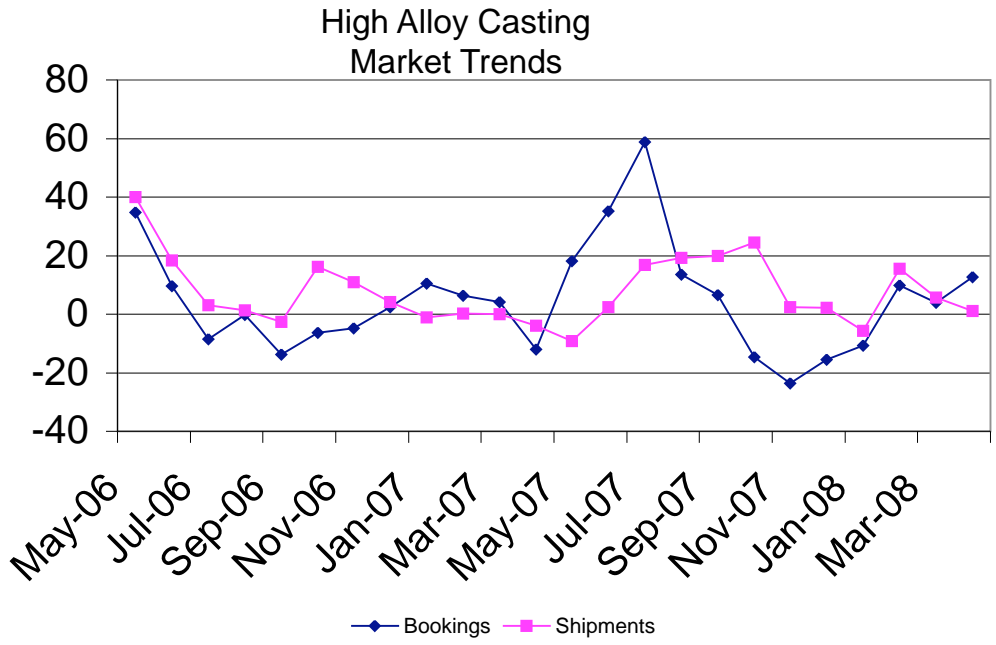
Inventory/Orders		1.65	1.64	1.68
Inventory/Shipments		1.68	1.69	1.70
Orders/Shipments		1.02	1.03	1.01

**American Iron and Steel Institute**

Raw Steel Shipments (million net tons)	9.0	9.2	9.4	9.2
---	-----	-----	-----	-----



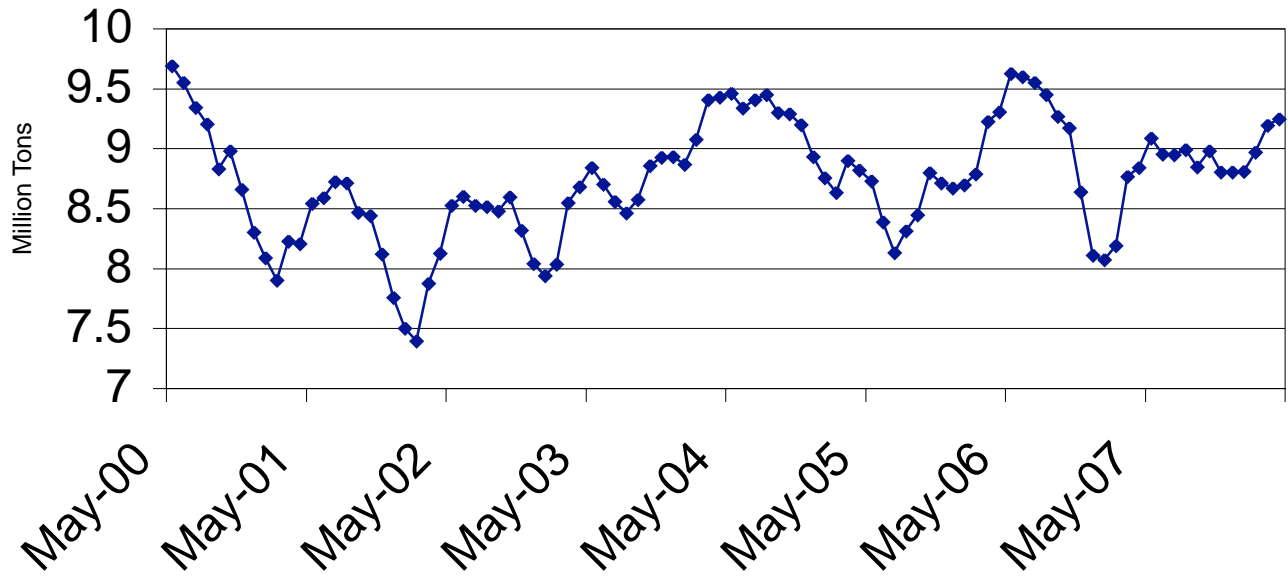
SFSA Postcards



SFSA Postcards

# Raw Steel Shipments

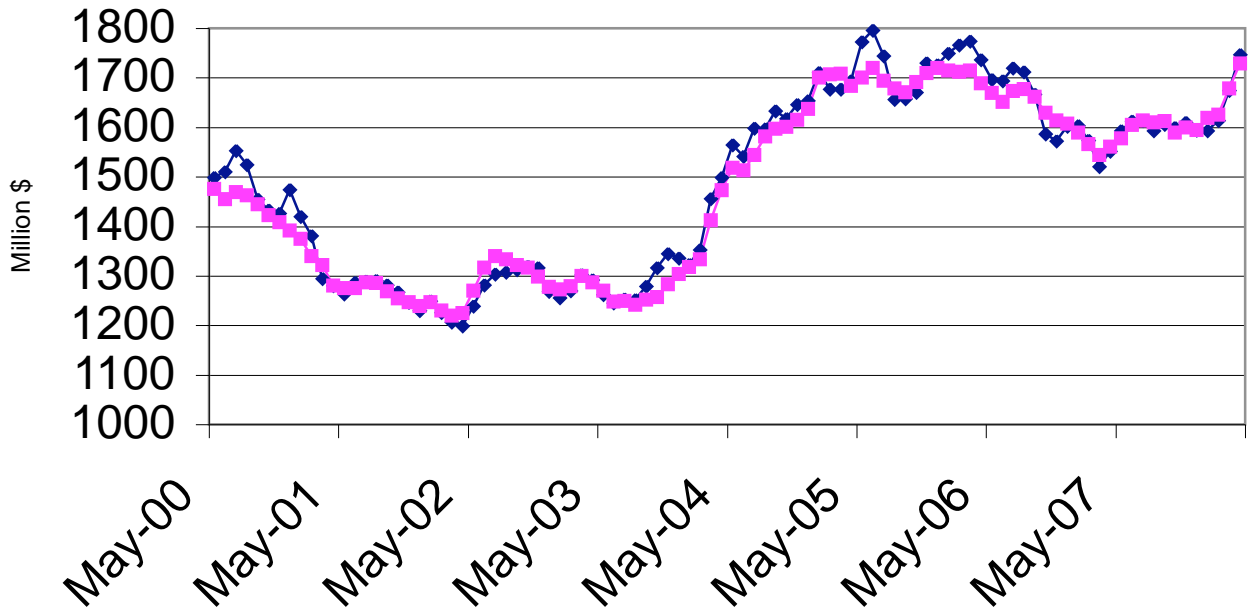
3 month average



AISI Data

# Iron and Steel Castings

3 month average

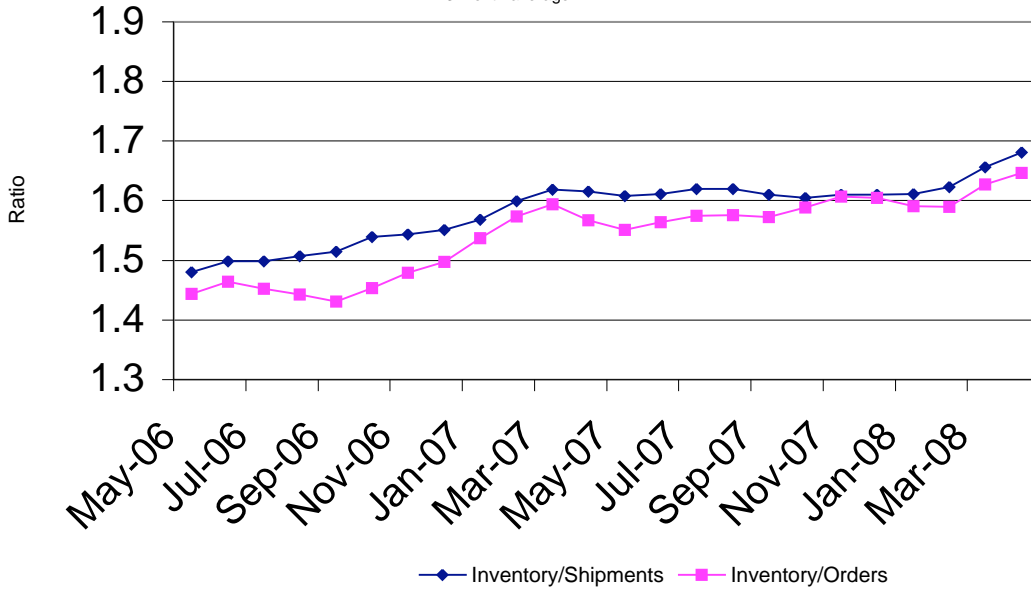


◆ New Orders    ■ Shipments

SFSA

### Nondefense Capital Goods less Aircraft

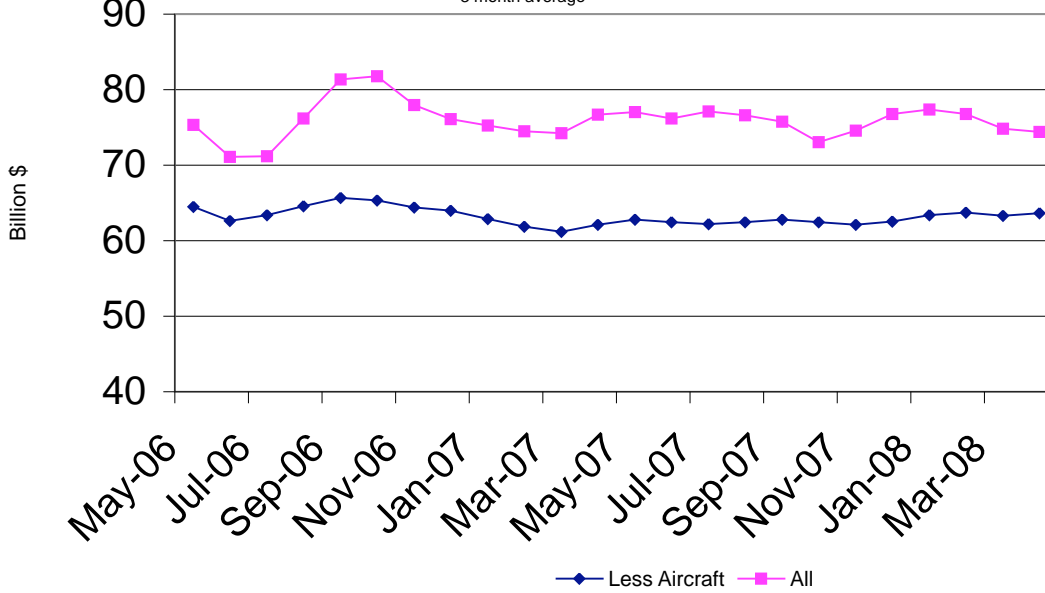
3 month average



Department of Commerce

### Nondefense Capital Goods New Orders

3 month average



Department of Commerce