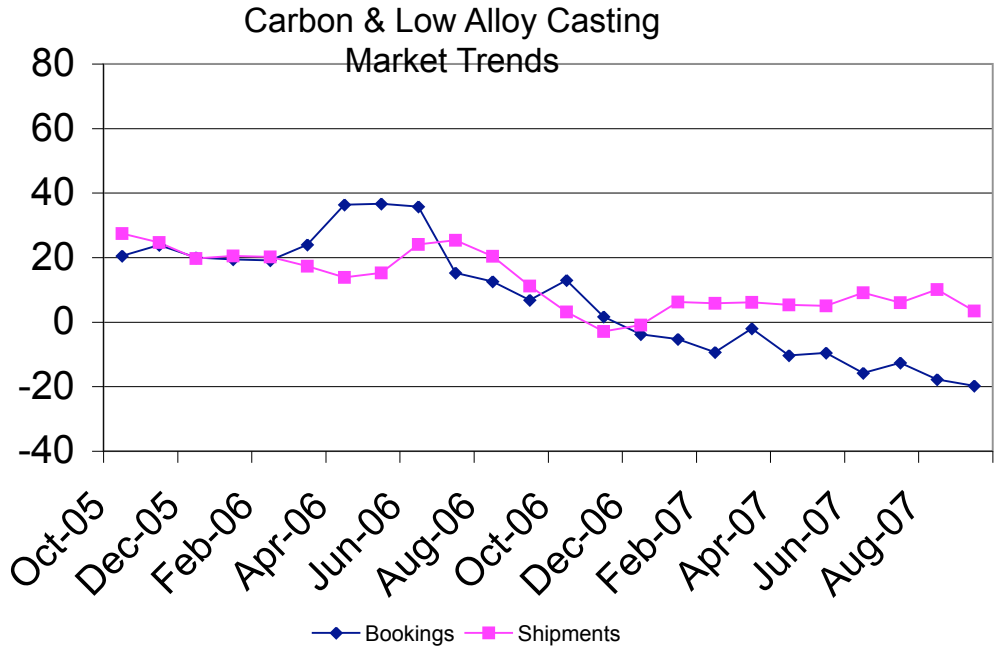
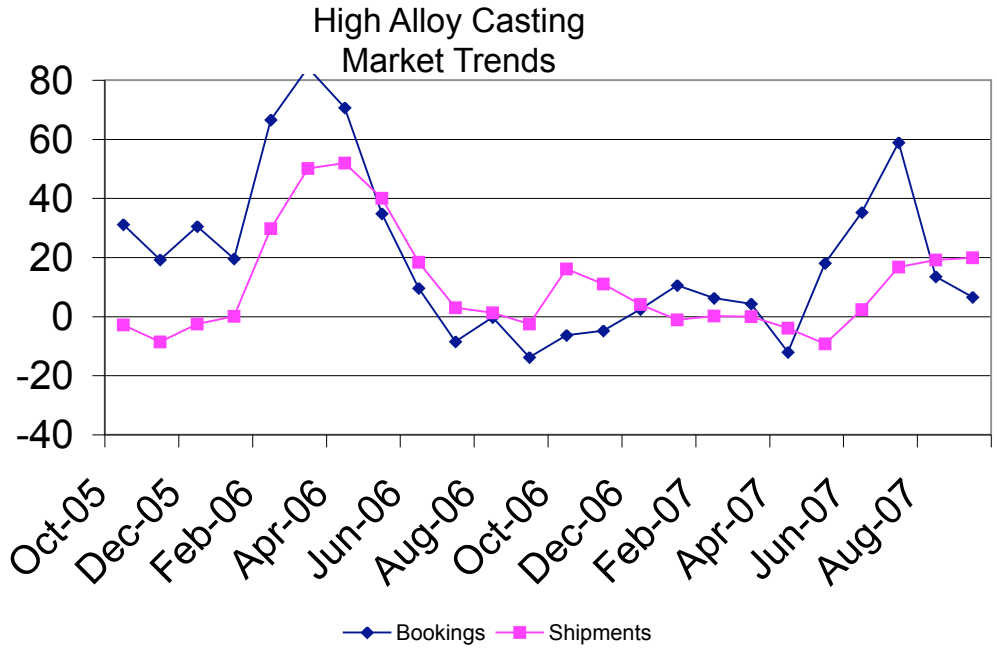


**STEEL FOUNDERS' SOCIETY OF AMERICA  
BUSINESS REPORT**

<b>SFSA Trend Cards</b> (%-12 mos. Ago)	12 Mo Avg	3 Mo Avg	Sep	Aug
<b>Carbon &amp; Low Alloy</b>				
Shipments	4.4	3.5	-6.5	5.2
Bookings	-10.4	-19.8	-15.0	-36.0
Backlog (wks)	11.1	11.2	10.0	12.0
<b>High Alloy</b>				
Shipments	6.6	19.9	12.8	8.1
Bookings	12.1	6.6	7.1	-23.0
Backlog (wks)	11.4	10.7	10.0	10.0
<b>Department of Commerce Census Data</b>				
<b>Iron &amp; Steel Foundries (million \$)</b>				
Shipments	1,592.1	1,612	1,633	1,581
New Orders	1,585.5	1,607	1,634	1,573
Inventories	2,415.8	2,541	2,533	2,545
<b>Nondefense Capital Goods (billion \$)</b>				
Shipments	66.3	67.1	67.6	67.5
New Orders	75.5	75.7	74.7	71.4
Inventories	118.7	122.7	123.1	122.7
<b>Nondefense Capital Goods less Aircraft (billion \$)</b>				
Shipments	61.0	61.3	62.1	61.5
New Orders	62.6	62.8	63.1	62.7
Inventories	97.4	98.7	99.1	98.7
Inventory/Orders		1.57	1.57	1.57
Inventory/Shipments		1.61	1.59	1.61
Orders/Shipments		1.02	1.01	1.02
<b>American Iron and Steel Institute</b>				
Raw Steel Shipments (million net tons)	8.7	8.8	8.5	9.2



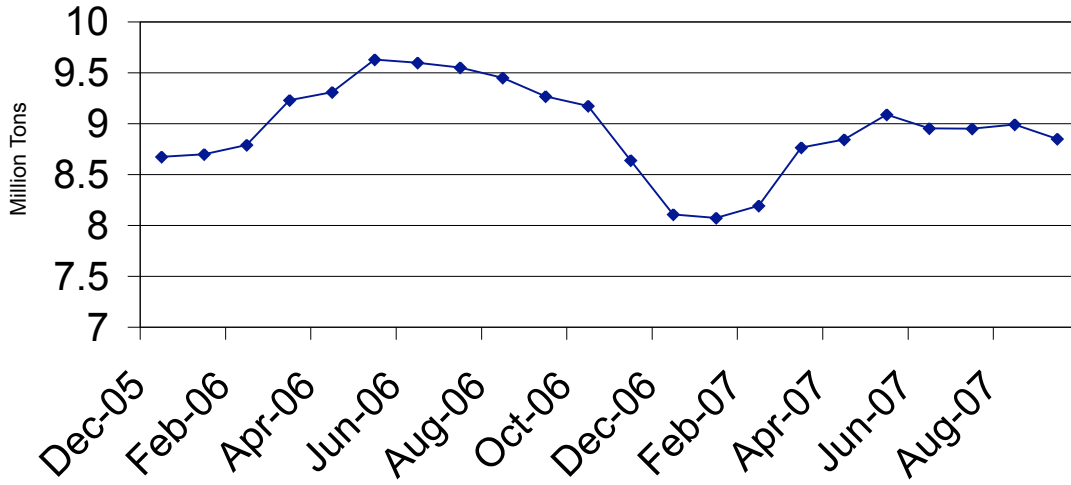
SFSA Postcards



SFSA Postcards

# Raw Steel Shipments

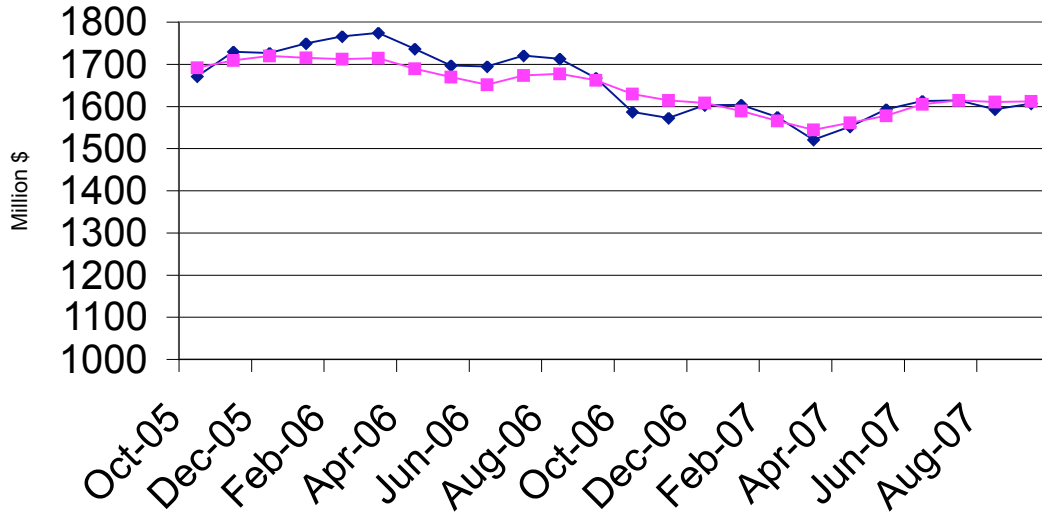
3 month average



AISI Data

# Iron and Steel Castings

3 month average

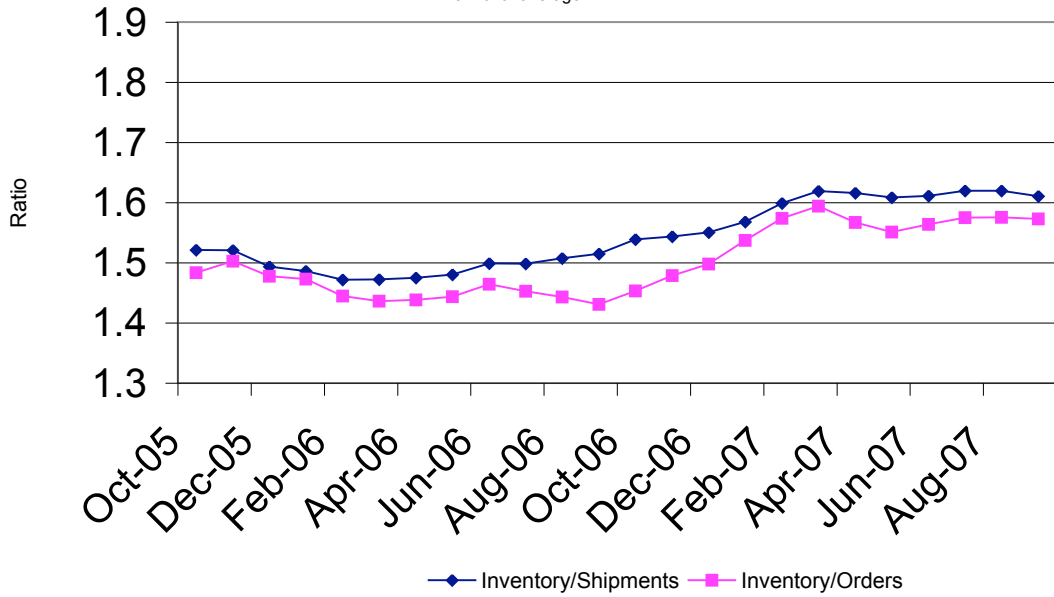


◆ New Orders    ■ Shipments

SFSA

### Nondefense Capital Goods less Aircraft

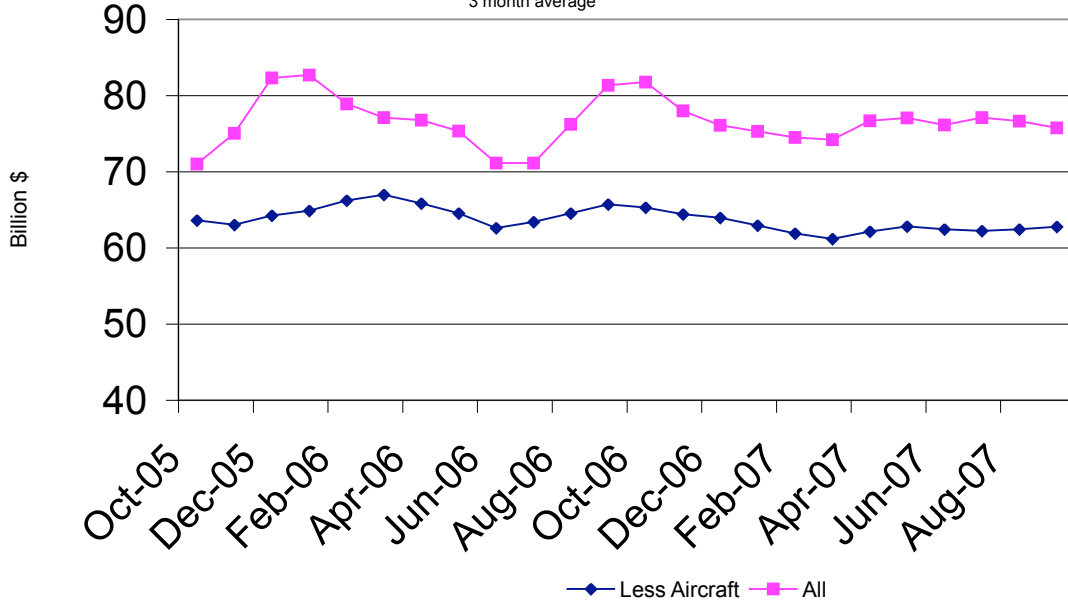
3 month average



Department of Commerce

### Nondefense Capital Goods New Orders

3 month average



Department of Commerce