

**STEEL FOUNDERS' SOCIETY OF AMERICA
BUSINESS REPORT**

SFSA Trend Cards (%-12 mos. Ago)	3 Mo Avg	May	Apr
--	----------	-----	-----

Carbon & Low Alloy

Shipments	15.2	28.0	22.1
Bookings	36.7	30.9	54.7
Backlog (wks)	11.8	11.2	13.5

High Alloy

Shipments	40.1	33.3	12.9
Bookings	34.9	6.4	21.2
Backlog (wks)	11.1	11.7	11.3

**Department of Commerce
Census Data**

Iron & Steel Foundries (million \$)

Shipments	1,670	1,647	1,630
New Orders	1,697	1,666	1,677
Inventories	2,045	2,101	2,074

Nondefense Capital Goods (billion \$)

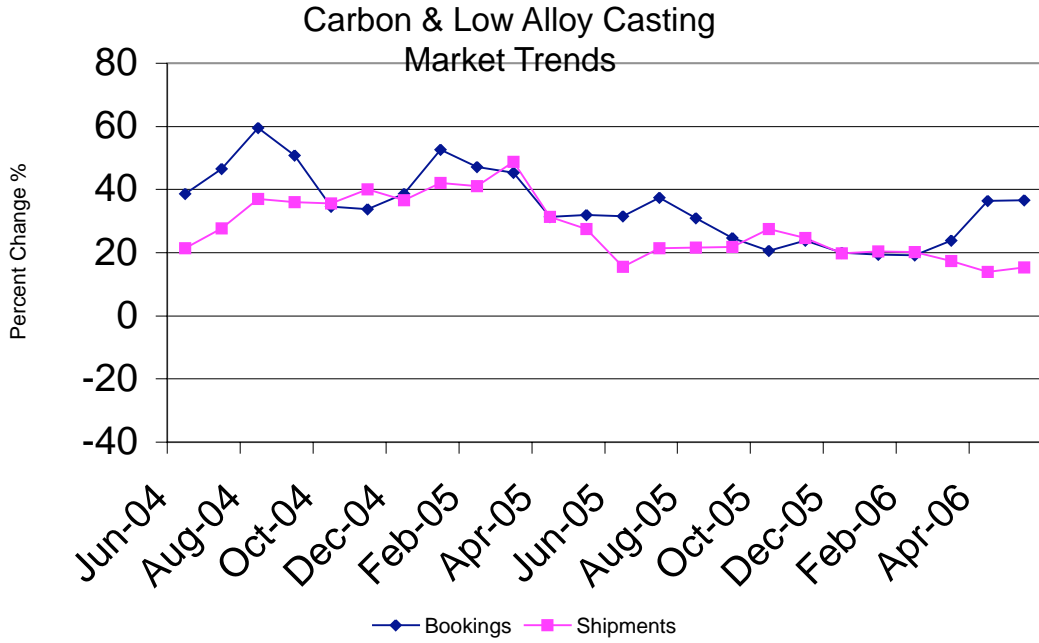
Shipments	67.8	66.3	65.2
New Orders	75.4	70.2	71.9
Inventories	110.9	108.5	108.8

**Nondefense Capital Goods
less Aircraft (billion \$)**

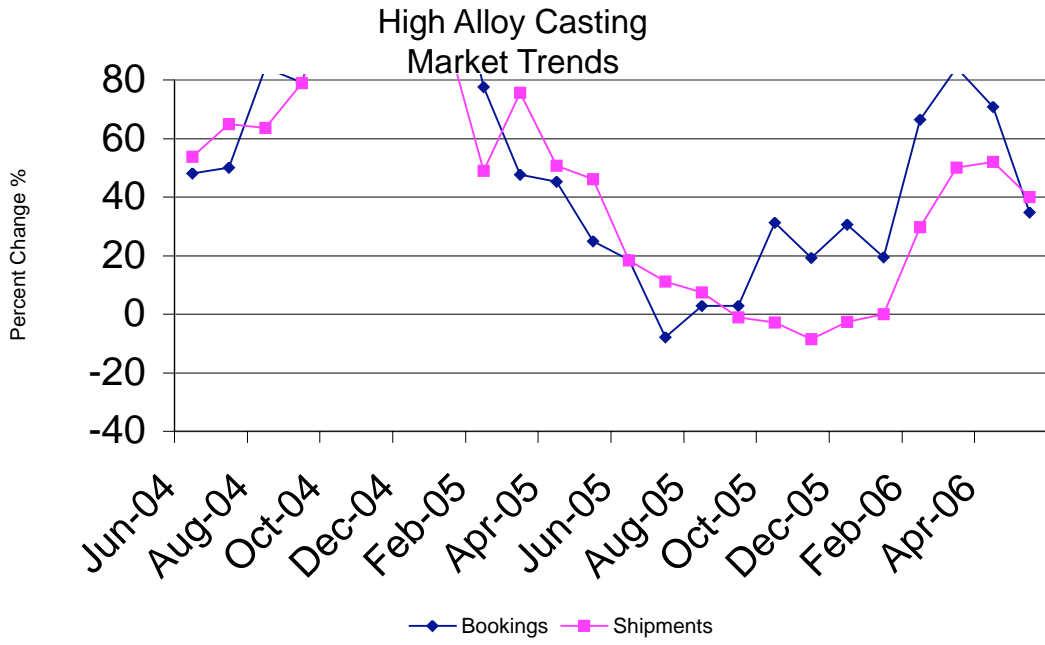
Shipments	62.9	61.1	61.3
New Orders	64.5	62.5	62.2
Inventories	93.1	91.3	91.5
Inventory/Orders	1.44	1.46	1.47
Inventory/Shipments	1.48	1.49	1.49
Orders/Shipments	1.03	1.02	1.01

American Iron and Steel Institute

Raw Steel Shipments (million net tons)	9.5		9.2
---	-----	--	-----



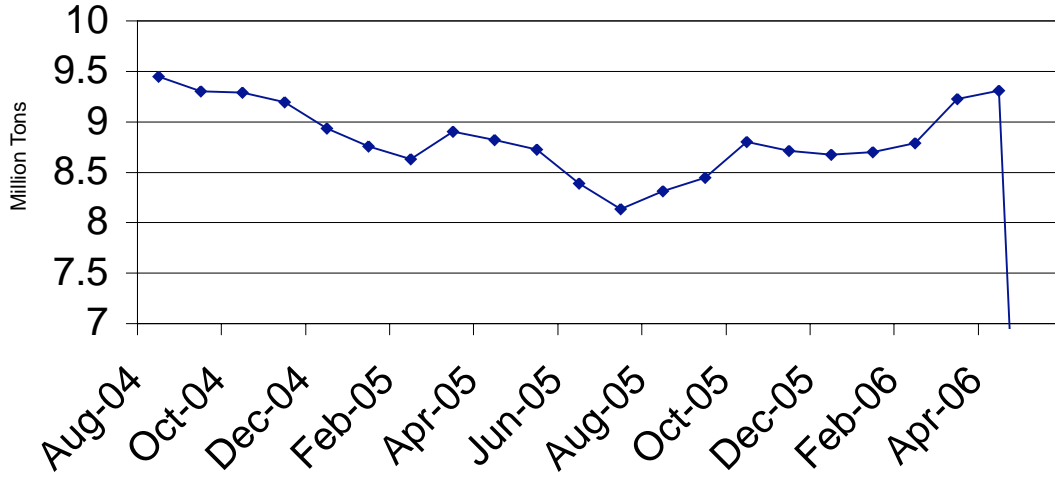
SFSA Postcards



SFSA Postcards

Raw Steel Shipments

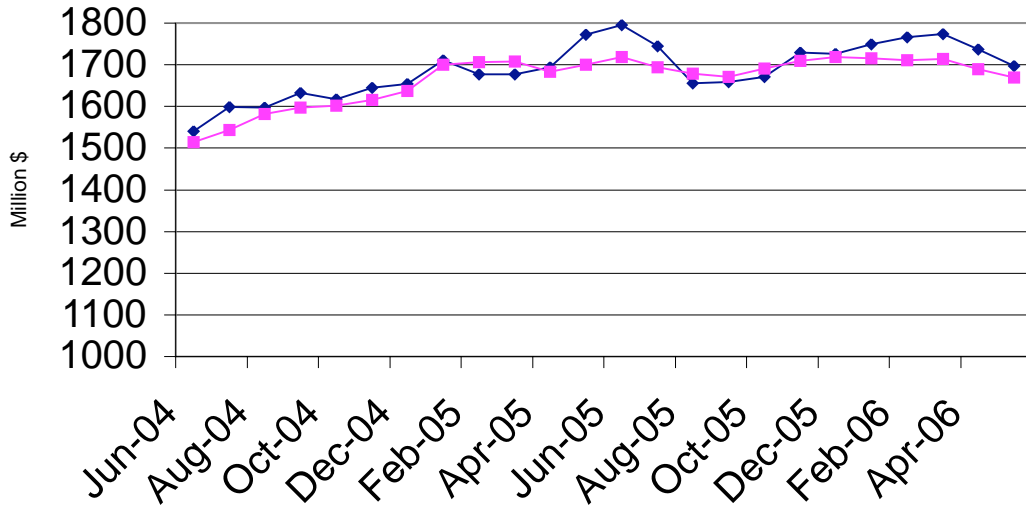
3 month average



AISI Data

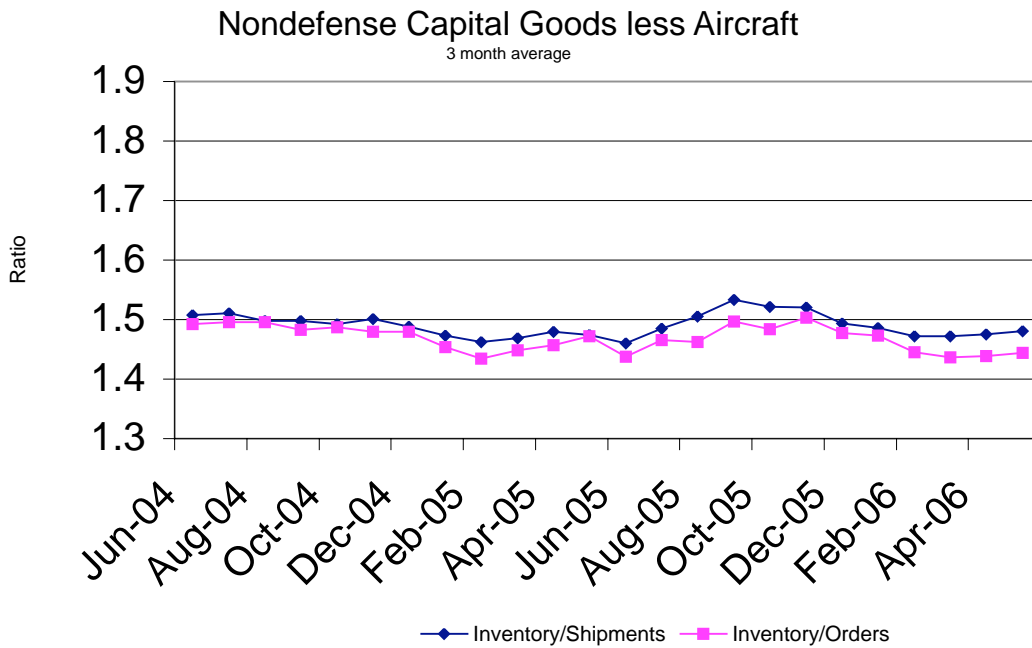
Iron and Steel Castings

3 month average

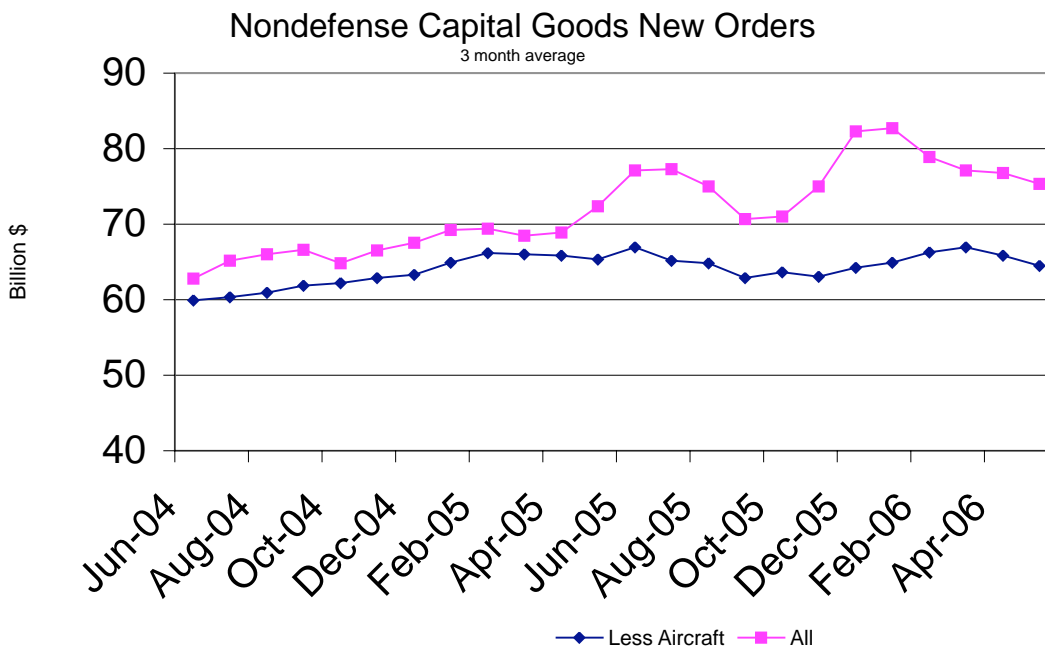


—◆— New Orders —■— Shipments

SFSA



Department of Commerce



Department of Commerce